

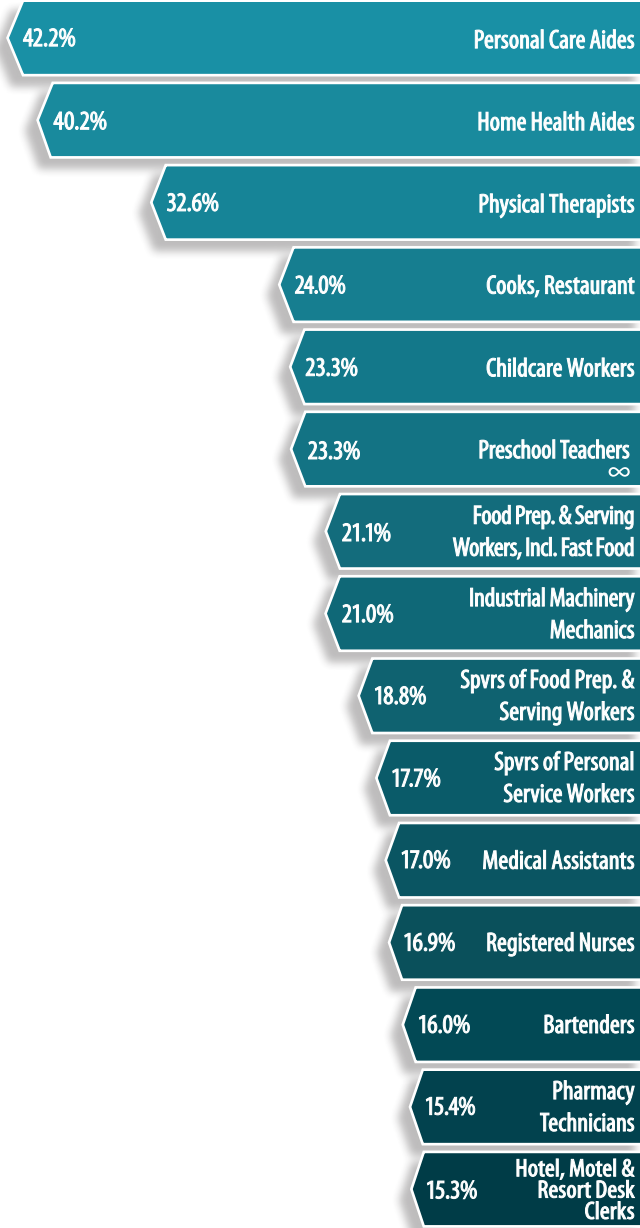
# New Mexico's Occupational Outlook

## New Mexico's Best Job Options

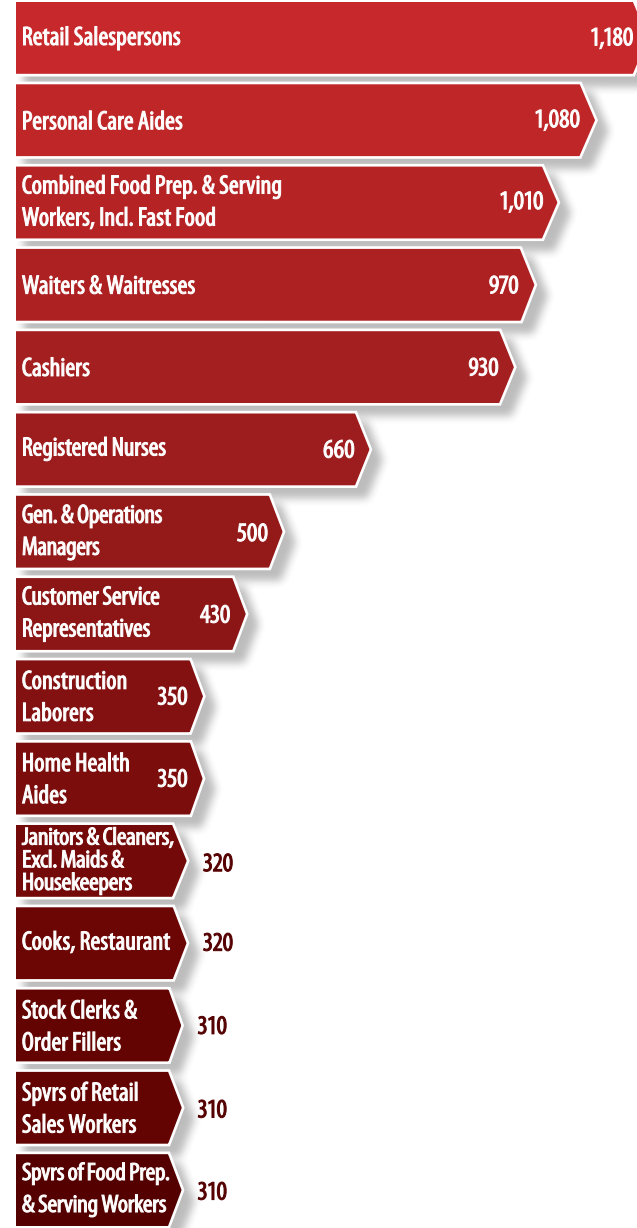


2016-2018

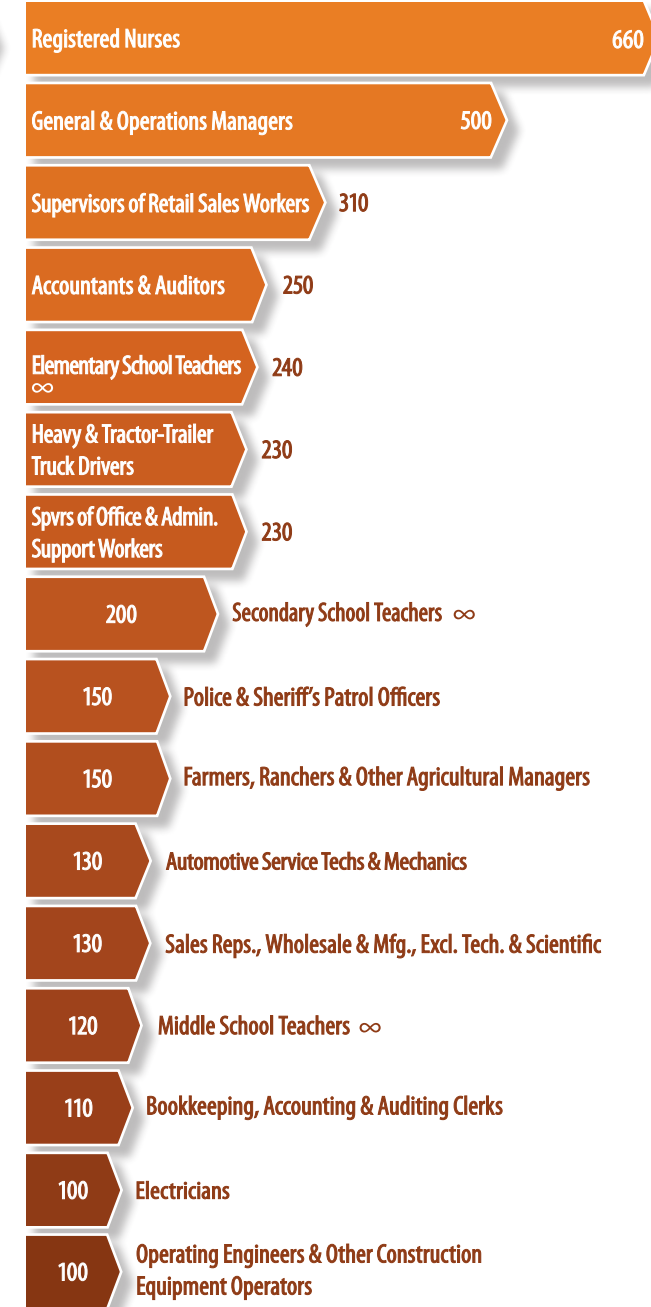
### NEW MEXICO'S FASTEST GROWING OCCUPATIONS



### OCCUPATIONS WITH THE MOST ANNUAL JOB OPENINGS



### HIGHER-PAYING OCCUPATIONS WITH THE MOST ANNUAL JOB OPENINGS



Occupations with at least 50 annual job openings projected between 2014 and 2024. Charts exclude occupations classified as "all other."

∞ Excludes special education teachers for preschool through kindergarten and special, career, and technical education teachers for middle and secondary school.

FOR MORE INFORMATION ON OCCUPATION PROJECTIONS, VISIT [WWW.DWS.STATE.NM.US/LMI](http://WWW.DWS.STATE.NM.US/LMI)

Occupations with a median wage that is equal to or greater than the median for all occupations of \$32,320. ∞ Excludes special education teachers for preschool through kindergarten and special, career, and technical education teachers for middle and secondary school.

## HIGHEST PAYING OCCUPATIONS

By Minimum Required Education

### DOCTORAL OR PROFESSIONAL DEGREE

	Annual Openings*	Median Annual Wage
Dentists, General	30	\$163,040
Family & General Practitioners	40	\$153,550
Physicists	30	\$134,990
Pharmacists	60	\$119,660

### MASTER'S DEGREE

Nurse Practitioners	50	\$101,990
Physician Assistants	30	\$98,560
Education Administrators, Postsecondary	30	\$80,890
Education Administrators, Elem. & Secondary	60	\$79,450

### BACHELOR'S DEGREE

Architectural & Engineering Managers	60	\$144,710
Environmental Engineers	30	\$104,860
Computer Programmers	40	\$103,200
Mechanical Engineers	40	\$102,020

### ASSOCIATE'S DEGREE

Dental Hygienists	30	\$84,940
Electrical & Electronics Engineering Technicians	40	\$65,640
Radiologic Technologists	30	\$57,590
Industrial Engineering Technicians	40	\$56,240

### POSTSECONDARY NONDEGREE AWARD (E.G., CERTIFICATION) OR SOME COLLEGE, NO DEGREE

Sprvs of Fire Fighting & Prevention Workers	30	\$49,670
Licensed Practical & Licensed Vocational Nurses	80	\$46,620
Computer User Support Specialists	60	\$43,220
Heating, Air Cond. & Refrig. Mechanics & Installers	30	\$40,590

### HIGH SCHOOL DIPLOMA OR EQUIVALENT CERTIFICATE

Detectives & Criminal Investigators	50	\$77,220
First-Line Supervisors of Police & Detectives	30	\$69,640
Petroleum Pump System Operators, Refinery Operators & Gaugers	40	\$67,320
Electrical Power-Line Installers & Repairers	40	\$58,790

### NO FORMAL EDUCATION CREDENTIAL

Derrick Operators, Oil & Gas	30	\$46,290
Rotary Drill Operators, Oil & Gas	40	\$44,270
Service Unit Operators, Oil, Gas & Mining	60	\$44,070
Machine Feeders & Offbearers	30	\$42,860

\* Projected annual job openings for 2014 through 2024. Includes occupations with at least 30 projected annual openings.

## NEW MEXICO'S STAR OCCUPATIONS

The Best Job Opportunities in New Mexico



### 5-STAR OCCUPATIONS

	Annual Openings	Median Annual Wage	Required Education
Registered Nurses	660	\$64,710	B
Electricians	100	\$46,250	HS
Medical & Health Services Managers	90	\$87,810	B
Insurance Sales Agents	80	\$39,080	HS
Industrial Machinery Mechanics	80	\$45,130	HS



### 4-STAR OCCUPATIONS

	Annual Openings	Median Annual Wage	Required Education
Sprvs of Office & Admin. Support Workers	230	\$45,310	HS
Social & Human Service Assistants	90	\$32,480	HS
Management Analysts	70	\$63,220	B
Physical Therapists	70	\$87,930	DP
Education Administrators, Elementary & Secondary School	60	\$79,450	M
Computer User Support Specialists	60	\$43,220	SC
Pharmacists	60	\$119,660	DP
Administrative Services Managers	50	\$71,900	B
Social/Community Service Managers	50	\$63,580	B
Health Specialties Teachers, Postsecondary	50	\$112,680	DP
Speech-Language Pathologists	50	\$74,120	M
Nurse Practitioners	50	\$101,990	M
Bus & Truck Mechanics & Diesel Engine Specialists	50	\$40,580	HS
Software Developers, Applications	40	\$77,590	B
Environmental Scientists & Specialists, Incl. Health	40	\$63,530	B
Fitness Trainers/Aerobics Instructors	40	\$34,890	HS
Education Administrators, Postsecondary	30	\$80,890	M
Personal Financial Advisors	30	\$95,140	B
Computer Systems Analysts	30	\$71,040	B
Dentists, General	30	\$163,040	DP
Occupational Therapists	30	\$78,790	M
Respiratory Therapists	30	\$53,730	A
Dental Hygienists	30	\$84,940	A
Heating, Air Cond. & Refrig. Mechanics & Installers	30	\$40,590	PNDA
Machinists	30	\$47,200	HS
Machine Feeders & Offbearers	30	\$42,860	NFEC



### 3-STAR OCCUPATIONS

	Annual Openings	Median Annual Wage	Required Education
Elementary School Teachers ∞	240	\$56,750	B
Secondary School Teachers ∞	200	\$52,920	B
Middle School Teachers ∞	120	\$50,900	B
Child, Family & School Social Workers	60	\$38,200	B
Clinical, Counseling & School Psychologists	50	\$63,850	DP
Educational, Guidance, School & Vocational Counselors	50	\$50,070	M
Healthcare Social Workers	50	\$48,700	M
Kindergarten Teachers ∞	50	\$52,870	B
Medical & Clinical Laboratory Technologists	50	\$47,020	B
Emergency Medical Technicians & Paramedics	50	\$32,380	PNDA
Mental Health Counselors	40	\$33,440	M
Mental Health & Substance Abuse Social Workers	40	\$37,050	B
Loan Officers	30	\$46,480	B
Special Education Teachers, Secondary School	30	\$51,050	B
Medical & Clinical Laboratory Technicians	30	\$38,520	A

∞ Excludes special education teachers for preschool through kindergarten and special, career, and technical education teachers for middle and secondary school.

A: Associate's Degree

B: Bachelor's Degree

DP: Doctoral or Professional Degree

HS: High School Diploma or Equivalent Certificate

M: Master's Degree

NFEC: No Formal Education Credential

PNDA: Postsecondary Non-Degree Award

SC: Some College, No Degree

STAR Occupations meet growth and wage criteria. For more information, visit: [www.dws.state.nm.us/LMI](http://www.dws.state.nm.us/LMI)

Contact us at: [nmdws.economicresearch@state.nm.us](mailto:nmdws.economicresearch@state.nm.us)

**CONNECT WITH US!**

**Twitter:** [www.twitter.com/nmdws](http://www.twitter.com/nmdws)

**YouTube:** [www.youtube.com/nmdws](http://www.youtube.com/nmdws)

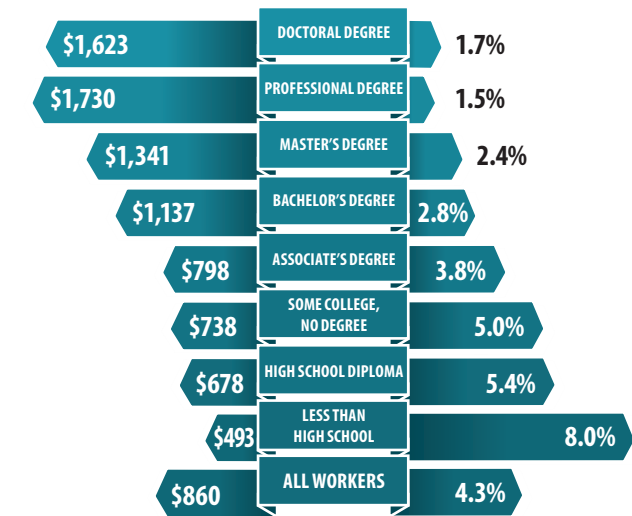
**Instagram:** [www.instagram.com/nmdws](http://www.instagram.com/nmdws)

## EDUCATION PAYS

Unemployment Rates & Weekly Earnings by Education Level

### MEDIAN WEEKLY EARNINGS

### UNEMPLOYMENT RATE



For persons 25 and older. Earnings are for full-time workers. Source: U.S. Bureau of Labor Statistics, Current Population Survey

## YOUR RESOURCES

The New Mexico Department of Workforce Solutions has a variety of resources for your use when exploring careers and applying for jobs.

### INTERACTIVE CAREER EXPLORATION & PLANNING

[www.NMCareerSolutions.com](http://www.NMCareerSolutions.com)

Career exploration resources; job search information & tips; education & training resources.

### EMPLOYMENT RESOURCES FOR JOB SEEKERS

[www.jobs.state.nm.us](http://www.jobs.state.nm.us)

Job matching & employer connections; resume & cover letter assistance; virtual recruiting.

[www.dws.state.nm.us/internships](http://www.dws.state.nm.us/internships)

The **Internships | Students Work** website links students and job seekers to employers offering internship experiences.