

# NEW MEXICO

# Labor Market Report

Bill Richardson  
*Governor*

Conroy Chino  
*Secretary*

Volume 35, No. 7, (published - August 31, 2006)

## HIGHLIGHTS — July 2006

...New Mexico's rate of over-the-year job growth was 3.1 percent for July 2006. The state has added 25,000 jobs over the last year, and we rank 8th highest for job growth among the states.

...Over the year, payroll employment rose 3.3 percent, adding 12,400 jobs to the Albuquerque MSA economy. Gains were once again led by construction.

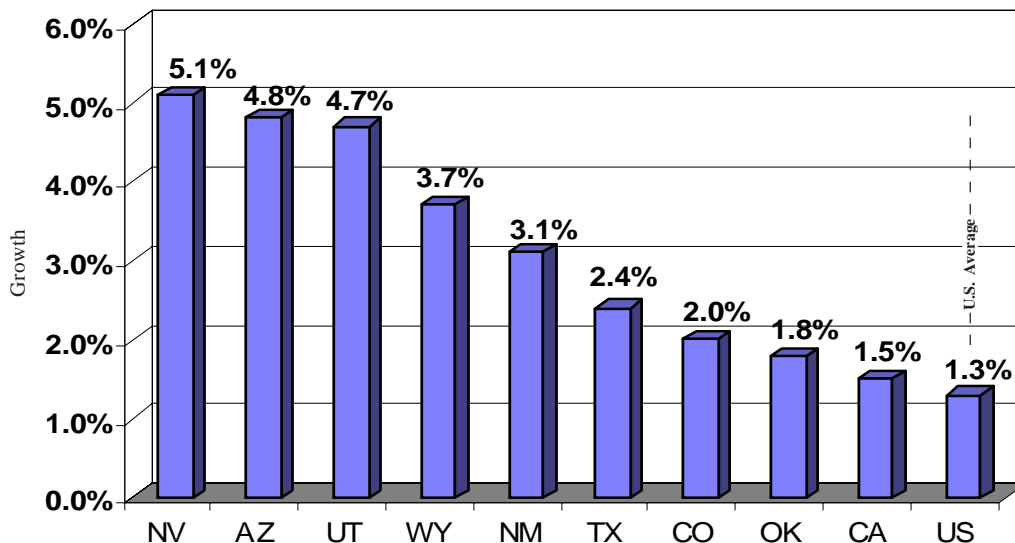
...The rate of over-the-year job growth for the Las Cruces MSA was 4.3 percent comparing July 2006 with the same month a year ago. The Las Cruces area has added 2,700 jobs. This rate of job growth is higher than the average for the state.

...Over-the-year job growth for the Santa Fe MSA was only 1.4 percent, adding just 900 jobs. This is the lowest rate of job growth the area has seen in a while.

...Over the last year, the Farmington MSA has added 1,400 jobs, growing 2.9 percent.

### Current Regional Nonfarm Employment Growth

July 2006 over July 2005 - Not Seasonally Adjusted



## INSIDE

NM & MSA Highlights

Page 2-6

NM Household Data History

Page 7

Total Nonfarm Growth

NM Ranking

Page 7

NM Labor Force Estimates

Page 8

Unemployment Rate Rankings  
by County & State

Page 9-10

Nonfarm Employment:

State & MSAs

Page 11-15

Average Hours & Earnings

& US Consumer Price Index

Page 15

NM Economic Activity by Area

Page 16-17

New Mexico  
Department of  
**LABOR**

[www.dol.state.nm.us](http://www.dol.state.nm.us)

Economic Research and Analysis  
P.O. Box 1928, Albuquerque, N.M. 87103  
505.222.4684

## New Mexico Labor Force and Payroll Employment

New Mexico's seasonally adjusted unemployment rate was 4.4 percent in July 2006, up from 4.1 percent in June. The unemployment rate remains low for the state considering that the national unemployment rate was 4.8 percent. A year ago, the state's unemployment rate was 5.2 percent.

New Mexico's rate of over-the-year job growth was 3.1 percent for July 2006. The state has added 25,000 jobs over the last year, and we rank 8th highest for job growth among the states. The job growth remains broad-based, with all 13 industry groups expanding. However, four industries account for almost two-thirds of the added jobs. The large government, health services, and professional & business services industries are joined by the moderately sized construction industry, adding a total of 15,900 jobs between them. The outlook remains favorable, with many companies expanding their workforces and a construction industry that appears to be withstanding higher raw material costs and higher interest rates.

Continuing the recent trend, the mining and construction industries stand out as generating the highest rates of job growth. These are not the largest industries in the state, but the growth rates are very high. Natural resources & mining has enjoyed about three years of job growth with sustained higher prices for oil and natural gas. Job growth currently stands at 9.4 percent over the year, adding 1,600 jobs. Construction employment continues to enjoy rapid growth as well, currently up 9.4 percent on the year, adding 5,300 jobs. The recent construction boom is also about three years old, following losses when several large construction projects in Albuquerque ended. Residential, non-residential and public works construction continue to grow at a fast pace.

Educational & health services, the state's largest private industry, added 3,500 jobs, growing 3.4 percent. Most components of this industry are growing at a moderate rate following some setbacks early last year. Government employment increased 1.8 percent, adding 3,400 jobs over the year. Federal government added 700 jobs, gaining 2.3 percent. State government added 600 jobs from a year ago. Local government employment increased by 2,100 jobs, with just over half the job gains being reported at local school districts. Local government also includes Indian tribes and their casinos.

Professional & business services added 3,700 jobs, making a substantial contribution to the overall job gain. Manufacturing employment made a gain of 1,500 jobs, with clear strength in computer and electronic products. Financial activities employment added 900 jobs from gains that were in the real estate and finance and insurance components.

Retail trade employment continues to enjoy moderate gains, currently showing a 1.2 percent increase on the year, rising by 1,100 jobs. Wholesale trade also made gains recently, adding 200 jobs over the year. The leisure & hospitality industry made gains of 2,300 jobs, with strong gains in eating and drinking places and minor gains in accommodation. Arts, entertainment and recreation did not add to the gains. The transportation, warehousing & utilities industry increased employment by 200 jobs, having seen very little growth recently. The miscellaneous *other services* category added 600 jobs, growing at 1.9 percent.

The information industry reported employment levels that were 700 jobs higher than a year ago. The information industry continues to do very well with activity from the state's film industry and improvements to the previously declining telecommunications component.

| New Mexico                     | Change From |           |           |           |           |
|--------------------------------|-------------|-----------|-----------|-----------|-----------|
|                                | July 2006   | June 2006 | July 2005 | June 2006 | July 2005 |
| Seasonally Adjusted            |             |           |           |           |           |
| Civilian Labor Force           | 947,600     | 952,300   | 935,600   | -4,700    | +12,000   |
| Employment                     | 905,800     | 913,600   | 886,500   | -7,800    | +19,300   |
| Unemployment                   | 41,800      | 38,800    | 49,100    | +3,000    | -7,300    |
| Rate                           | 4.4%        | 4.1%      | 5.2%      |           |           |
| Rate (not seasonally adjusted) | 4.8%        | 4.8%      | 5.7%      |           |           |

Note: Numbers may not add due to rounding.

## Albuquerque MSA Labor Force and Payroll Employment

(Bernalillo, Sandoval, Torrance & Valencia Counties)

The seasonally adjusted unemployment rate for the Albuquerque MSA was 4.2 percent in July, up from 3.9 percent in June. A year ago, the unemployment rate was 4.9 percent.

Payroll employment fell 0.4 percent (1,500 jobs) over the month, due largely to seasonal declines in school employment as government (-2,200 jobs) and educational & health services (-500 jobs) were each down from June levels. The bright spot again this month was construction, up 600 jobs (1.9 percent) over the month. Three other industries reported gains over the month: professional & business services (400 jobs); financial activities (100 jobs); and transportation, warehousing, & utilities (100 jobs). Employment in six of the 12 major industry divisions was unchanged from June levels.

Over the year, payroll employment rose 3.3 percent, adding 12,400 jobs to the Albuquerque area economy. Gains were once again led by construction, with an increase of 2,800 jobs or 9.5 percent. Housing starts in the Albuquerque area continued to set new records due to low interest rates, population increases, and growth in new family formations. There are indications, however, that rising construction costs and competition from the existing home market have begun to negatively impact new home construction. The number of building permits dropped sharply from June to July in Albuquerque, and home building appears to be slowing in many areas of the country.

The professional & business services industry grew at a solid 3.4 percent rate (2,100 jobs), led by gains in administrative support and waste management services (1,200 jobs) and professional, scientific, and technical services (700 jobs). The 4.4 percent over-the-year gain in administrative support and waste management services was the component's largest increase since October 2004.

Government employment increased by 2,000 jobs in the last 12 months, with growth in all three branches. Local government was up 1,300, its largest gain in a year and a half. State government employment grew 2.7 percent, adding 600 jobs, while federal government employment increased a meager 0.7 percent, adding 100 jobs.

Educational & health services added 1,800 jobs since last July, almost all of them in the health care and social assistance component. Industry employment growth has moderated since averaging 5.4 percent in 2004, but has still exceeded 3.0 percent for 21 of the past 24 months.

Leisure & hospitality gained 4.5 percent (1,700 jobs) in July, its largest over-the-year increase in over five years. Over-the-year employment in the full-service restaurant component has increased each month since August 2005, after declining for ten straight months from August 2004 through July 2005.

Manufacturing employment continues to grow at an impressive rate, expanding by 4.8 percent (1,100 jobs) since this time last year. The industry has added 900 jobs since January of this year as several existing firms expand operations and new firms enter the market. Manufacturing employment reached 23,800 in both June and July, marking the industry's highest level since December 2002.

Information, wholesale trade, and the miscellaneous *other services* category each added 200 jobs in the last 12 months. Over-the-year employment in information has increased each month in 2006, with July's rate standing at 2.3 percent. Industry employment peaked at 11,700 in February 2001 and has been slowly recovering since falling to 8,500 in September 2005. During that same period, employment in the telecommunications component was reduced by nearly 40 percent, dropping from 6,700 to 4,100.

Over-the-year growth in retail trade employment increased in July by 100 jobs (0.2 percent). General merchandise stores accounted for 600 new jobs, but the gain was offset by losses from unpublished components. Financial activities also gained 100 jobs (0.5 percent) over the year.

| Albuquerque                    |           |           | Change From |           |           |
|--------------------------------|-----------|-----------|-------------|-----------|-----------|
| Seasonally Adjusted            | July 2006 | June 2006 | July 2005   | June 2006 | July 2005 |
| Civilian Labor Force           | 410,400   | 408,900   | 400,000     | +1,500    | +10,400   |
| Employment                     | 393,200   | 393,000   | 380,200     | +200      | +13,000   |
| Unemployment                   | 17,200    | 15,900    | 19,800      | +1,300    | -2,600    |
| Rate                           | 4.2%      | 3.9%      | 4.9%        |           |           |
| Rate (not seasonally adjusted) | 4.6%      | 4.4%      | 5.4%        |           |           |

Note: Numbers may not add due to rounding.

## Las Cruces MSA Labor Force and Payroll Employment

(Doña Ana County)

The seasonally adjusted unemployment rate in the Las Cruces MSA was 4.9 percent in July 2006, up from 4.5 percent in June. A year ago, the area's unemployment rate was 5.8 percent.

Another 100 jobs temporarily left the Las Cruces economy in July following the loss of 1,700 jobs in June. Most of those jobs will return in August when the fall semester starts at New Mexico State University and local school districts finish hiring for the new school year. This two-month drop in employment happens every summer and shows how reliant the local economy is on education jobs. In July, 500 jobs were lost by local government, which includes school districts. State government added 100 jobs. There was also a net gain of 300 jobs in private industries.

The rate of over-the-year job growth for the Las Cruces area was 4.3 percent comparing July 2006 with the same month a year ago. The Las Cruces area has added 2,700 jobs. This rate of job growth is higher than the average for the state.

The educational & health services industry gained 600 jobs, increasing 6.1 percent. The health services industry has enjoyed a long period of rapid growth, with only a brief pause in 2004. Construction employment also has done well recently in the local area, increasing 500 jobs, growing 11.1 percent.

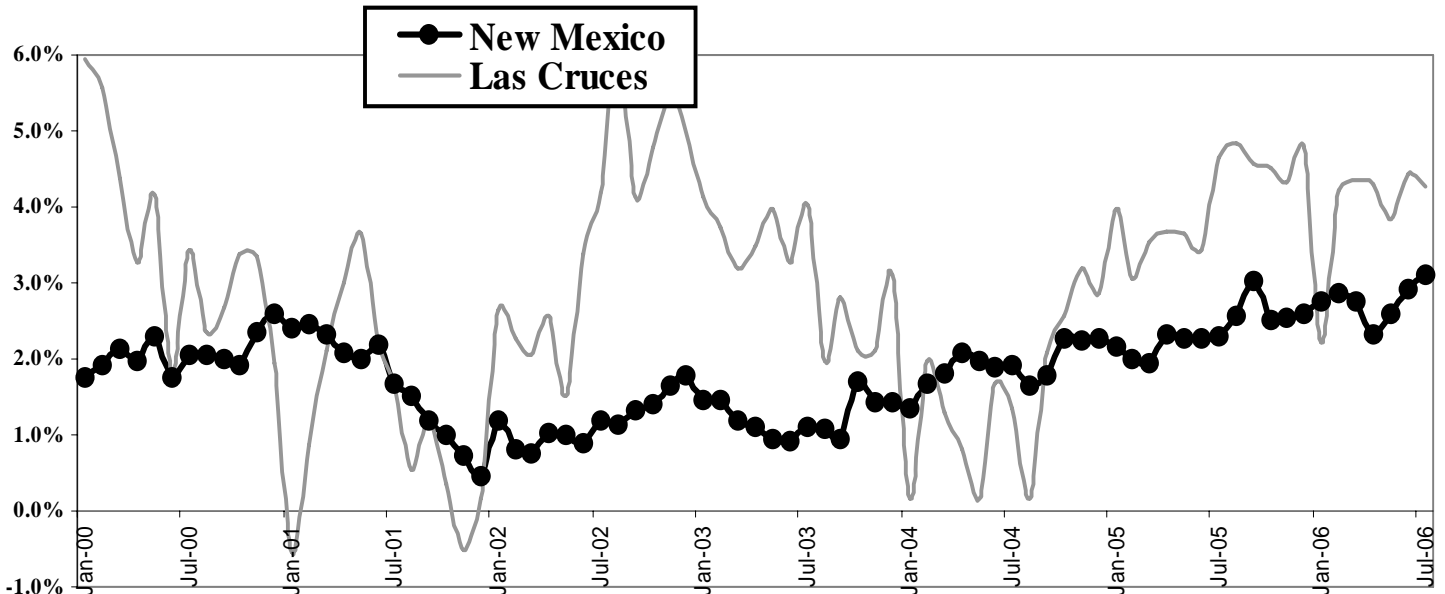
Government employment added 400 jobs, with no change in state government and increases of 100 in federal government and 300 in local government employment. State government includes New Mexico State University.

The leisure & hospitality industry gained 300 jobs, growing 4.7 percent over the year, while the information industry retained recent gains of 200 jobs. Employment increased by 100 jobs each in seven industries: financial activities; manufacturing; the miscellaneous category of *other services*; professional & business services; retail trade; wholesale trade; and transportation, warehousing, & utilities.

| Las Cruces<br>Seasonally Adjusted | July 2006 | June 2006 | July 2005 | Change From |           |
|-----------------------------------|-----------|-----------|-----------|-------------|-----------|
|                                   |           |           |           | June 2006   | July 2005 |
| Civilian Labor Force              | 89,500    | 88,900    | 86,800    | +600        | +2,700    |
| Employment                        | 85,100    | 84,900    | 81,700    | +200        | +3,400    |
| Unemployment                      | 4,400     | 4,000     | 5,100     | +400        | -700      |
| Rate                              | 4.9%      | 4.5%      | 5.8%      |             |           |
| Rate (not seasonally adjusted)    | 5.2%      | 5.1%      | 6.2%      |             |           |

Note: Numbers may not add due to rounding.

### Annual Nonfarm Job Growth Rates - NM and Las Cruces



## Santa Fe MSA Labor Force and Payroll Employment

(Santa Fe County)

The seasonally adjusted unemployment rate in Santa Fe was 3.6 percent in June 2006, up from 3.2 the previous month. A year ago, the area had an unemployment rate of 4.2 percent.

Santa Fe gained 600 jobs in July 2006 on top of the 700 jobs gained in June. Construction increased employment by 200 jobs, as did retail trade and the leisure & hospitality industry. Information and the miscellaneous *other services* industry both gained 100 jobs. The gains were partially offset by the seasonal loss of 200 jobs in the educational & health services industry.

Over-the-year job growth for Santa Fe was only 1.4 percent, adding just 900 jobs. This is the lowest rate of job growth the area has seen in a while. Earlier this year, the rate of job growth had been close to the average for the state. The job growth is evident in only seven of the area's 12 industries. Three industries remain at the same level of employment as last year, and two industries have lost jobs over the year.

The large government sector added 300 jobs on the year, growing at 1.8 percent. Federal government jobs remain the same in number as a year ago, state government jobs have increased by 100, and local government added 200 jobs.

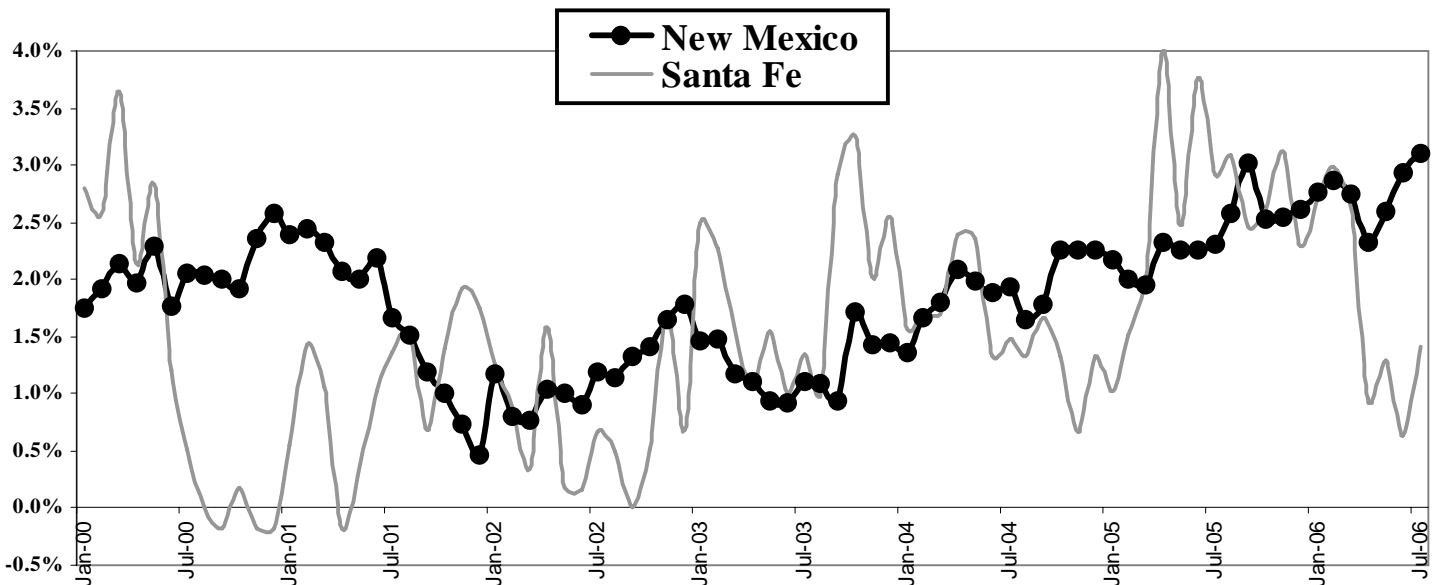
In the private sector, the construction industry added 300 jobs, growing 6.3 percent. The information industry, which includes motion picture and video industries, also gained 300 jobs, a 30.0 percent increase for this small industry. Educational & health services added 200 jobs, and financial activities gained 100 jobs. Retail trade added 100 jobs, as did the miscellaneous *other services* industry.

The three industries reporting employment that was unchanged from last year's levels were wholesale trade; transportation, warehousing & utilities; and the professional & business services industry. The two industries reporting lost jobs over the year were manufacturing and leisure & hospitality. The leisure & hospitality industry reported employment that was 400 jobs lower than a year ago.

| <b>Santa Fe</b>                | Change From      |                  |                  |                  |                  |
|--------------------------------|------------------|------------------|------------------|------------------|------------------|
| <u>Seasonally Adjusted</u>     | <u>July 2006</u> | <u>June 2006</u> | <u>July 2006</u> | <u>June 2006</u> | <u>July 2005</u> |
| Civilian Labor Force           | 78,400           | 78,300           | 77,700           | +100             | +700             |
| Employment                     | 75,600           | 75,800           | 74,500           | -200             | +1,100           |
| Unemployment                   | 2,800            | 2,500            | 3,200            | +300             | -400             |
| Rate                           | 3.6%             | 3.2%             | 4.2%             |                  |                  |
| Rate (not seasonally adjusted) | 3.8%             | 3.7%             | 4.4%             |                  |                  |

Note: Numbers may not add due to rounding.

**Annual Nonfarm Job Growth Rates - NM and Santa Fe**



## Farmington MSA Labor Force and Payroll Employment

(San Juan County)

The seasonally adjusted unemployment rate in Farmington was 4.7 percent in July 2006, up from 4.4 percent in June. A year ago, the area had an unemployment rate of 5.4 percent.

The Farmington area lost 600 jobs in July from a seasonal reduction in government-run education employment over the summer. Local government lost 800 teaching jobs, and federal government was down 100 jobs. The private sector gained 300 jobs compared to June.

Over the last year, the Farmington area has added 1,400 jobs, growing 2.9 percent. The rate of job growth is the highest the area has seen in eight months, following some decline from extra-high levels reached 18 months ago. Previous levels of close to five percent were unsustainable in the long run. Job growth in the area has again come close to the statewide average, and the Farmington area continues to well.

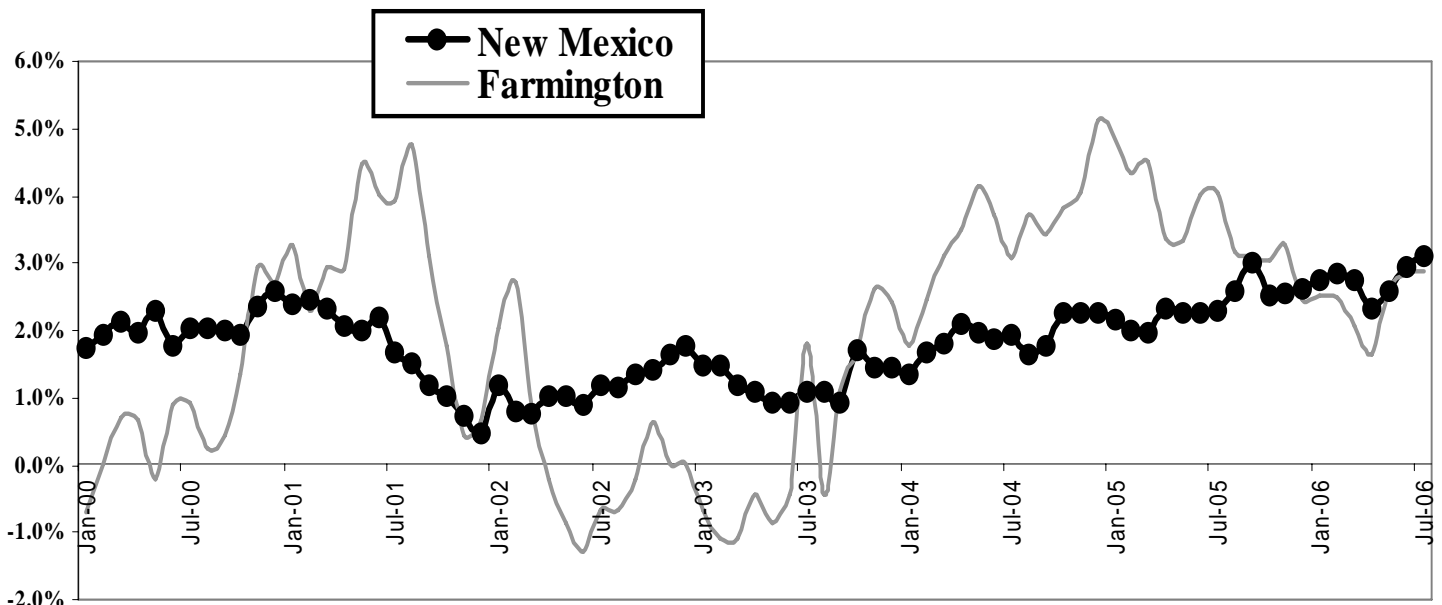
Job growth in Farmington peaked in December 2004 when the over-the-year rate of job growth reached 5.1 percent. This was the fastest increase in jobs since mid-1995. Since reaching this recent peak, job growth has gradually returned to more sustainable levels.

Private services-providing industries continue to do fairly well, adding 700 jobs over the year, growing 2.5 percent. Government employment has been sluggish for a while but currently shows 200 more jobs in local government than a year ago and no growth in either federal or state government employment.

| <b>Farmington</b>              | Change From      |                  |                  |                  |                  |
|--------------------------------|------------------|------------------|------------------|------------------|------------------|
| <u>Seasonally Adjusted</u>     | <u>July 2006</u> | <u>June 2006</u> | <u>July 2005</u> | <u>June 2006</u> | <u>July 2005</u> |
| Civilian Labor Force           | 56,600           | 56,800           | 55,400           | -200             | +1,200           |
| Employment                     | 54,000           | 54,300           | 52,400           | -300             | +1,600           |
| Unemployment                   | 2,700            | 2,500            | 3,000            | +200             | -300             |
| Rate                           | 4.7%             | 4.4%             | 5.4%             |                  |                  |
| Rate (not seasonally adjusted) | 5.3%             | 5.2%             | 6.1%             |                  |                  |

Note: Numbers may not add due to rounding.

### Annual Nonfarm Job Growth Rates - NM and Farmington



*New Mexico - Seasonally Adjusted  
Labor Force, Employment,  
Unemployment, & Unemployment Rate*

*Total Nonfarm Employment  
Growth Rankings  
New Mexico and United States*

|                      |            | Civilian<br>Labor<br>Force | Un-<br>Employ-<br>ment | Un-<br>Employ-<br>ment<br>Rate<br>% | Unadj.<br>Rate<br>% |       |
|----------------------|------------|----------------------------|------------------------|-------------------------------------|---------------------|-------|
| 1986                 |            | 667,200                    | 605,800                | 61,400                              | 9.2%                |       |
| 1987                 |            | 674,200                    | 613,400                | 60,800                              | 9.0%                |       |
| 1988                 |            | 682,000                    | 630,300                | 51,700                              | 7.6%                |       |
| 1989                 |            | 691,800                    | 645,300                | 46,500                              | 6.7%                |       |
| 1990                 |            | 711,900                    | 663,700                | 48,200                              | 6.8%                |       |
| 1991                 |            | 719,200                    | 667,700                | 51,500                              | 7.2%                |       |
| 1992                 |            | 735,500                    | 680,500                | 55,000                              | 7.5%                |       |
| 1993                 |            | 755,100                    | 700,300                | 54,800                              | 7.3%                |       |
| 1994                 |            | 776,800                    | 725,400                | 51,400                              | 6.6%                |       |
| 1995                 |            | 798,700                    | 744,600                | 54,100                              | 6.8%                |       |
| 1996                 |            | 812,800                    | 751,800                | 61,000                              | 7.5%                |       |
| 1997                 |            | 822,600                    | 768,600                | 54,000                              | 6.6%                |       |
| 1998                 |            | 835,900                    | 783,700                | 52,200                              | 6.2%                |       |
| 1999                 |            | 840,000                    | 793,100                | 46,900                              | 5.6%                |       |
| 2000                 |            | 852,300                    | 810,000                | 42,300                              | 5.0%                |       |
| 2001                 |            | 863,700                    | 821,000                | 42,700                              | 4.9%                |       |
| 2002                 |            | 875,600                    | 827,300                | 48,300                              | 5.5%                |       |
| 2003                 |            | 893,100                    | 840,400                | 52,700                              | 5.9%                |       |
| 2004                 |            | 914,500                    | 862,400                | 52,100                              | 5.7%                |       |
| 2005                 |            | 935,900                    | 886,700                | 49,200                              | 5.3%                |       |
| 2005                 | JAN        | 926,900                    | 875,900                | 51,000                              | 5.5%                | 5.5%  |
|                      | FEB        | 928,400                    | 877,700                | 50,800                              | 5.5%                | 5.9%  |
|                      | MAR        | 930,100                    | 879,600                | 50,500                              | 5.4%                | 5.6%  |
|                      | APR        | 933,400                    | 883,200                | 50,200                              | 5.4%                | 5.3%  |
|                      | MAY        | 933,800                    | 883,900                | 49,900                              | 5.3%                | 5.3%  |
|                      | JUN        | 934,100                    | 884,600                | 49,500                              | 5.3%                | 5.9%  |
|                      | JUL        | 935,600                    | 886,500                | 49,100                              | 5.2%                | 5.7%  |
|                      | AUG        | 937,200                    | 888,600                | 48,700                              | 5.2%                | 5.1%  |
|                      | SEP        | 940,700                    | 892,400                | 48,200                              | 5.1%                | 5.1%  |
|                      | OCT        | 942,300                    | 894,500                | 47,800                              | 5.1%                | 4.7%  |
|                      | NOV        | 943,400                    | 896,000                | 47,300                              | 5.0%                | 4.7%  |
|                      | DEC        | 944,600                    | 897,700                | 46,900                              | 5.0%                | 4.4%  |
| 2006                 | JAN        | 944,700                    | 898,600                | 46,100                              | 4.9%                | 5.0%  |
|                      | FEB        | 961,700                    | 916,000                | 45,700                              | 4.8%                | 5.0%  |
|                      | MAR        | 954,400                    | 916,300                | 38,100                              | 4.0%                | 3.9%  |
|                      | APR        | 958,000                    | 916,900                | 41,100                              | 4.3%                | 4.2%  |
|                      | MAY        | 956,100                    | 916,100                | 40,000                              | 4.2%                | 4.1%  |
|                      | JUN        | 952,300                    | 913,600                | 38,800                              | 4.1%                | 4.8%  |
|                      | JUL        | 947,600                    | 905,800                | 41,800                              | 4.4%                | 4.8%  |
|                      | AUG        |                            |                        |                                     |                     |       |
|                      | SEP        |                            |                        |                                     |                     |       |
|                      | OCT        |                            |                        |                                     |                     |       |
|                      | NOV        |                            |                        |                                     |                     |       |
|                      | DEC        |                            |                        |                                     |                     |       |
| <b># CHANGE FROM</b> |            |                            |                        |                                     |                     |       |
|                      | Month Ago  | -4,700                     | -7,800                 | 3,000                               | 0.3%                | 0.0%  |
|                      | Year Ago   | 12,000                     | 19,300                 | -7,300                              | -0.8%               | -0.9% |
|                      | 2 Yrs. Ago | 33,100                     | 43,300                 | -10,200                             | -1.3%               | -1.2% |
|                      | 3 Yrs. Ago | 54,300                     | 65,500                 | -11,300                             | -1.5%               | -1.6% |
| <b>% CHANGE FROM</b> |            |                            |                        |                                     |                     |       |
|                      | Month Ago  | -0.5%                      | -0.9%                  | 7.7%                                |                     |       |
|                      | Year Ago   | 1.3%                       | 2.2%                   | -14.9%                              |                     |       |
|                      | 2 Yrs. Ago | 3.6%                       | 5.0%                   | -19.6%                              |                     |       |
|                      | 3 Yrs. Ago | 6.1%                       | 7.8%                   | -21.3%                              |                     |       |

| State                | Rank     | July<br>2005     | July<br>2006     | Change         | %<br>Change |
|----------------------|----------|------------------|------------------|----------------|-------------|
| Nevada               | 1        | 1,225.5          | 1,288.1          | 62.6           | 5.1%        |
| Arizona              | 2        | 2,465.4          | 2,582.6          | 117.2          | 4.8%        |
| Utah                 | 3        | 1,140.8          | 1,194.2          | 53.4           | 4.7%        |
| Idaho                | 4        | 617.7            | 646.2            | 28.5           | 4.6%        |
| Wyoming              | 5        | 271.0            | 281.1            | 10.1           | 3.7%        |
| Florida              | 6        | 7,703.7          | 7,960.7          | 257.0          | 3.3%        |
| Washington           | 7        | 2,789.2          | 2,877.3          | 88.1           | 3.2%        |
| <b>New Mexico</b>    | <b>8</b> | <b>805.1</b>     | <b>830.1</b>     | <b>25.0</b>    | <b>3.1%</b> |
| Oregon               | 9        | 1,655.8          | 1,706.8          | 51.0           | 3.1%        |
| Montana              | 10       | 427.8            | 440.3            | 12.5           | 2.9%        |
| Minnesota            | 11       | 2,712.7          | 2,791.6          | 78.9           | 2.9%        |
| Hawaii               | 12       | 596.5            | 611.1            | 14.6           | 2.4%        |
| Texas                | 13       | 9,684.9          | 9,921.0          | 236.1          | 2.4%        |
| North Carolina       | 14       | 3,850.7          | 3,944.1          | 93.4           | 2.4%        |
| South Dakota         | 15       | 394.1            | 403.5            | 9.4            | 2.4%        |
| South Carolina       | 16       | 1,837.3          | 1,880.9          | 43.6           | 2.4%        |
| Colorado             | 17       | 2,238.1          | 2,282.6          | 44.5           | 2.0%        |
| Georgia              | 18       | 3,984.3          | 4,061.5          | 77.2           | 1.9%        |
| Nebraska             | 19       | 936.0            | 954.0            | 18.0           | 1.9%        |
| Oklahoma             | 20       | 1,498.3          | 1,525.7          | 27.4           | 1.8%        |
| Iowa                 | 21       | 1,472.3          | 1,498.9          | 26.6           | 1.8%        |
| Delaware             | 22       | 686.4            | 698.2            | 11.8           | 1.7%        |
| Alabama              | 23       | 1,939.3          | 1,971.8          | 32.5           | 1.7%        |
| North Dakota         | 24       | 339.6            | 345.2            | 5.6            | 1.6%        |
| DC                   | 25       | 432.9            | 439.7            | 6.8            | 1.6%        |
| Arkansas             | 26       | 1,167.4          | 1,184.6          | 17.2           | 1.5%        |
| California           | 27       | 14,719.5         | 14,933.5         | 214.0          | 1.5%        |
| Virginia             | 28       | 3,666.2          | 3,719.1          | 52.9           | 1.4%        |
| Maryland             | 29       | 2,568.0          | 2,602.8          | 34.8           | 1.4%        |
| <b>United States</b> |          | <b>133,413.0</b> | <b>135,141.0</b> | <b>1,728.0</b> | <b>1.3%</b> |
| Alaska               | 30       | 333.3            | 337.6            | 4.3            | 1.3%        |
| Missouri             | 31       | 2,713.5          | 2,746.8          | 33.3           | 1.2%        |
| Tennessee            | 32       | 2,730.1          | 2,763.6          | 33.5           | 1.2%        |
| New Hampshire        | 33       | 638.2            | 645.8            | 7.6            | 1.2%        |
| Kentucky             | 34       | 1,817.6          | 1,838.8          | 21.2           | 1.2%        |
| Illinois             | 35       | 5,905.2          | 5,970.0          | 64.8           | 1.1%        |
| West Virginia        | 36       | 747.6            | 755.4            | 7.8            | 1.0%        |
| New York             | 37       | 8,524.3          | 8,610.3          | 86.0           | 1.0%        |
| Wisconsin            | 38       | 2,861.1          | 2,889.9          | 28.8           | 1.0%        |
| Vermont              | 39       | 300.4            | 303.1            | 2.7            | 0.9%        |
| Pennsylvania         | 40       | 5,692.4          | 5,740.7          | 48.3           | 0.8%        |
| New Jersey           | 41       | 4,070.8          | 4,099.9          | 29.1           | 0.7%        |
| Massachusetts        | 42       | 3,209.8          | 3,231.7          | 21.9           | 0.7%        |
| Indiana              | 43       | 2,924.7          | 2,943.9          | 19.2           | 0.7%        |
| Connecticut          | 44       | 1,655.3          | 1,664.3          | 9.0            | 0.5%        |
| Ohio                 | 45       | 5,430.4          | 5,456.9          | 26.5           | 0.5%        |
| Mississippi          | 46       | 1,123.0          | 1,128.4          | 5.4            | 0.5%        |
| Kansas               | 47       | 1,316.8          | 1,323.1          | 6.3            | 0.5%        |
| Maine                | 48       | 622.4            | 624.7            | 2.3            | 0.4%        |
| Rhode Island         | 49       | 491.5            | 493.1            | 1.6            | 0.3%        |
| Michigan             | 50       | 4,306.6          | 4,301.9          | -4.7           | -0.1%       |
| Louisiana            | 51       | 1,941.0          | 1,766.4          | -174.6         | -9.0%       |

Source: U.S. Department of Labor, Bureau of Labor Statistics

Employment numbers are not seasonally adjusted.

Employment numbers are in thousands.

## New Mexico Labor Force Estimates – Not Seasonally Adjusted 1/

|                    | JULY 2006   |         |        |      | JUNE 2006   |         |        |       | Absolute Change |        |        | Percent Change |       |        |
|--------------------|-------------|---------|--------|------|-------------|---------|--------|-------|-----------------|--------|--------|----------------|-------|--------|
|                    | Labor Force | Empl.   | Unemp. | Rate | Labor Force | Empl.   | Unemp. | Rate  | Labor Force     | Empl.  | Unemp. | Labor Force    | Empl. | Unemp. |
| STATEWIDE          | 959,712     | 913,469 | 46,243 | 4.8% | 962,954     | 917,193 | 45,761 | 4.8%  | -3,242          | -3,724 | 482    | -0.3%          | -0.4% | 1.1%   |
| Albuquerque MSA 2/ | 411,216     | 392,448 | 18,768 | 4.6% | 412,992     | 394,673 | 18,319 | 4.4%  | -1,776          | -2,225 | 449    | -0.4%          | -0.6% | 2.5%   |
| Bernalillo         | 320,405     | 306,089 | 14,316 | 4.5% | 321,773     | 307,824 | 13,949 | 4.3%  | -1,368          | -1,735 | 367    | -0.4%          | -0.6% | 2.6%   |
| Sandoval           | 50,734      | 48,249  | 2,485  | 4.9% | 50,911      | 48,523  | 2,388  | 4.7%  | -177            | -274   | 97     | -0.3%          | -0.6% | 4.1%   |
| Torrance           | 7,803       | 7,395   | 408    | 5.2% | 7,860       | 7,437   | 423    | 5.4%  | -57             | -42    | -15    | -0.7%          | -0.6% | -3.5%  |
| Valencia           | 32,274      | 30,715  | 1,559  | 4.8% | 32,448      | 30,889  | 1,559  | 4.8%  | -174            | -174   | 0      | -0.5%          | -0.6% | 0.0%   |
| Farmington MSA 3/  | 56,573      | 53,581  | 2,992  | 5.3% | 57,597      | 54,616  | 2,981  | 5.2%  | -1,024          | -1,035 | 11     | -1.8%          | -1.9% | 0.4%   |
| Las Cruces MSA 4/  | 88,228      | 83,650  | 4,578  | 5.2% | 88,388      | 83,867  | 4,521  | 5.1%  | -160            | -217   | 57     | -0.2%          | -0.3% | 1.3%   |
| Santa Fe MSA 5/    | 80,045      | 77,010  | 3,035  | 3.8% | 79,972      | 76,994  | 2,978  | 3.7%  | 73              | 16     | 57     | 0.1%           | 0.0%  | 1.9%   |
| Catron             | 1,619       | 1,533   | 86     | 5.3% | 1,626       | 1,543   | 83     | 5.1%  | -7              | -10    | 3      | -0.4%          | -0.6% | 3.6%   |
| Chaves             | 27,198      | 25,736  | 1,462  | 5.4% | 27,433      | 25,982  | 1,451  | 5.3%  | -235            | -246   | 11     | -0.9%          | -0.9% | 0.8%   |
| Cibola             | 12,534      | 11,835  | 699    | 5.6% | 12,532      | 11,863  | 669    | 5.3%  | 2               | -28    | 30     | 0.0%           | -0.2% | 4.5%   |
| Colfax             | 7,853       | 7,525   | 328    | 4.2% | 7,705       | 7,375   | 330    | 4.3%  | 148             | 150    | -2     | 1.9%           | 2.0%  | -0.6%  |
| Curry              | 21,550      | 20,613  | 937    | 4.3% | 21,537      | 20,594  | 943    | 4.4%  | 13              | 19     | -6     | 0.1%           | 0.1%  | -0.6%  |
| De Baca            | 939         | 899     | 40     | 4.3% | 935         | 894     | 41     | 4.4%  | 4               | 5      | -1     | 0.4%           | 0.6%  | -2.4%  |
| Eddy               | 25,628      | 24,468  | 1,160  | 4.5% | 25,860      | 24,743  | 1,117  | 4.3%  | -232            | -275   | 43     | -0.9%          | -1.1% | 3.8%   |
| Grant              | 12,167      | 11,530  | 637    | 5.2% | 12,323      | 11,700  | 623    | 5.1%  | -156            | -170   | 14     | -1.3%          | -1.5% | 2.2%   |
| Guadalupe          | 1,792       | 1,680   | 112    | 6.3% | 1,782       | 1,653   | 129    | 7.2%  | 10              | 27     | -17    | 0.6%           | 1.6%  | -13.2% |
| Harding            | 398         | 379     | 19     | 4.8% | 393         | 374     | 19     | 4.8%  | 5               | 5      | 0      | 1.3%           | 1.3%  | 0.0%   |
| Hidalgo            | 2,619       | 2,483   | 136    | 5.2% | 2,624       | 2,502   | 122    | 4.6%  | -5              | -19    | 14     | -0.2%          | -0.8% | 11.5%  |
| Lea                | 27,665      | 26,572  | 1,093  | 4.0% | 27,533      | 26,448  | 1,085  | 3.9%  | 132             | 124    | 8      | 0.5%           | 0.5%  | 0.7%   |
| Lincoln            | 11,690      | 11,251  | 439    | 3.8% | 11,538      | 11,107  | 431    | 3.7%  | 152             | 144    | 8      | 1.3%           | 1.3%  | 1.9%   |
| Los Alamos         | 11,992      | 11,659  | 333    | 2.8% | 12,167      | 11,834  | 333    | 2.7%  | -175            | -175   | 0      | -1.4%          | -1.5% | 0.0%   |
| Luna               | 14,210      | 12,881  | 1,329  | 9.4% | 13,617      | 12,088  | 1,529  | 11.2% | 593             | 793    | -200   | 4.4%           | 6.6%  | -13.1% |
| McKinley           | 27,606      | 25,541  | 2,065  | 7.5% | 28,227      | 26,160  | 2,067  | 7.3%  | -621            | -619   | -2     | -2.2%          | -2.4% | -0.1%  |
| Mora               | 2,112       | 1,942   | 170    | 8.0% | 2,113       | 1,935   | 178    | 8.4%  | -1              | 7      | -8     | 0.0%           | 0.4%  | -4.5%  |
| Otero              | 27,753      | 26,345  | 1,408  | 5.1% | 27,773      | 26,371  | 1,402  | 5.0%  | -20             | -26    | 6      | -0.1%          | -0.1% | 0.4%   |
| Quay               | 4,240       | 4,018   | 222    | 5.2% | 4,255       | 4,033   | 222    | 5.2%  | -15             | -15    | 0      | -0.4%          | -0.4% | 0.0%   |
| Rio Arriba         | 23,166      | 21,923  | 1,243  | 5.4% | 23,272      | 22,054  | 1,218  | 5.2%  | -106            | -131   | 25     | -0.5%          | -0.6% | 2.1%   |
| Roosevelt          | 9,351       | 8,976   | 375    | 4.0% | 9,341       | 8,957   | 384    | 4.1%  | 10              | 19     | -9     | 0.1%           | 0.2%  | -2.3%  |
| San Miguel         | 13,640      | 12,872  | 768    | 5.6% | 13,691      | 12,922  | 769    | 5.6%  | -51             | -50    | -1     | -0.4%          | -0.4% | -0.1%  |
| Sierra             | 5,926       | 5,665   | 261    | 4.4% | 5,913       | 5,651   | 262    | 4.4%  | 13              | 14     | -1     | 0.2%           | 0.2%  | -0.4%  |
| Socorro            | 9,927       | 9,493   | 434    | 4.4% | 9,970       | 9,546   | 424    | 4.3%  | -43             | -53    | 10     | -0.4%          | -0.6% | 2.4%   |
| Taos               | 17,901      | 16,862  | 1,039  | 5.8% | 17,674      | 16,620  | 1,054  | 6.0%  | 227             | 242    | -15    | 1.3%           | 1.5%  | -1.4%  |
| Union              | 2,171       | 2,097   | 74     | 3.4% | 2,168       | 2,092   | 76     | 3.5%  | 3               | 5      | -2     | 0.1%           | 0.2%  | -2.6%  |

|                    | JULY 2006   |         |        |      | JULY 2005   |         |        |       | Absolute Change |        |        | Percent Change |       |        |
|--------------------|-------------|---------|--------|------|-------------|---------|--------|-------|-----------------|--------|--------|----------------|-------|--------|
|                    | Labor Force | Empl.   | Unemp. | Rate | Labor Force | Empl.   | Unemp. | Rate  | Labor Force     | Empl.  | Unemp. | Labor Force    | Empl. | Unemp. |
| STATEWIDE          | 959,712     | 913,469 | 46,243 | 4.8% | 940,194     | 886,683 | 53,511 | 5.7%  | 19,518          | 26,786 | -7,268 | 2.1%           | 3.0%  | -13.6% |
| Albuquerque MSA 2/ | 411,216     | 392,448 | 18,768 | 4.6% | 400,771     | 379,202 | 21,569 | 5.4%  | 10,445          | 13,246 | -2,801 | 2.6%           | 3.5%  | -13.0% |
| Bernalillo         | 320,405     | 306,089 | 14,316 | 4.5% | 312,069     | 295,757 | 16,312 | 5.2%  | 8,336           | 10,332 | -1,996 | 2.7%           | 3.5%  | -12.2% |
| Sandoval           | 50,734      | 48,249  | 2,485  | 4.9% | 49,561      | 46,621  | 2,940  | 5.9%  | 1,173           | 1,628  | -455   | 2.4%           | 3.5%  | -15.5% |
| Torrance           | 7,803       | 7,395   | 408    | 5.2% | 7,655       | 7,146   | 509    | 6.6%  | 148             | 249    | -101   | 1.9%           | 3.5%  | -19.8% |
| Valencia           | 32,274      | 30,715  | 1,559  | 4.8% | 31,485      | 29,678  | 1,807  | 5.7%  | 789             | 1,037  | -248   | 2.5%           | 3.5%  | -13.7% |
| Farmington MSA 3/  | 56,573      | 53,581  | 2,992  | 5.3% | 55,297      | 51,919  | 3,378  | 6.1%  | 1,276           | 1,662  | -386   | 2.3%           | 3.2%  | -11.4% |
| Las Cruces MSA 4/  | 88,228      | 83,650  | 4,578  | 5.2% | 85,542      | 80,223  | 5,319  | 6.2%  | 2,686           | 3,427  | -741   | 3.1%           | 4.3%  | -13.9% |
| Santa Fe MSA 5/    | 80,045      | 77,010  | 3,035  | 3.8% | 79,327      | 75,843  | 3,484  | 4.4%  | 718             | 1,167  | -449   | 0.9%           | 1.5%  | -12.9% |
| Catron             | 1,619       | 1,533   | 86     | 5.3% | 1,578       | 1,481   | 97     | 6.1%  | 41              | 52     | -11    | 2.6%           | 3.5%  | -11.3% |
| Chaves             | 27,198      | 25,736  | 1,462  | 5.4% | 26,644      | 24,881  | 1,763  | 6.6%  | 554             | 855    | -301   | 2.1%           | 3.4%  | -17.1% |
| Cibola             | 12,534      | 11,835  | 699    | 5.6% | 12,473      | 11,672  | 801    | 6.4%  | 61              | 163    | -102   | 0.5%           | 1.4%  | -12.7% |
| Colfax             | 7,853       | 7,525   | 328    | 4.2% | 8,066       | 7,673   | 393    | 4.9%  | -213            | -148   | -65    | 0.5%           | 1.4%  | -12.7% |
| Curry              | 21,550      | 20,613  | 937    | 4.3% | 20,995      | 19,956  | 1,039  | 4.9%  | 555             | 657    | -102   | 2.6%           | 3.3%  | -9.8%  |
| De Baca            | 939         | 899     | 40     | 4.3% | 940         | 890     | 50     | 5.3%  | -1              | 9      | -10    | -0.1%          | 1.0%  | -20.0% |
| Eddy               | 25,628      | 24,468  | 1,160  | 4.5% | 25,186      | 23,798  | 1,388  | 5.5%  | 442             | 670    | -228   | 1.8%           | 2.8%  | -16.4% |
| Grant              | 12,167      | 11,530  | 637    | 5.2% | 12,240      | 11,434  | 806    | 6.6%  | -73             | 96     | -169   | -0.6%          | 0.8%  | -21.0% |
| Guadalupe          | 1,792       | 1,680   | 112    | 6.3% | 1,861       | 1,704   | 157    | 8.4%  | -69             | -24    | -45    | -3.7%          | -1.4% | -28.7% |
| Harding            | 398         | 379     | 19     | 4.8% | 369         | 354     | 15     | 4.1%  | 29              | 25     | 4      | 7.9%           | 7.1%  | 26.7%  |
| Hidalgo            | 2,619       | 2,483   | 136    | 5.2% | 2,800       | 2,640   | 160    | 5.7%  | -181            | -157   | -24    | -6.5%          | -5.9% | -15.0% |
| Lea                | 27,665      | 26,572  | 1,093  | 4.0% | 26,365      | 25,098  | 1,267  | 4.8%  | 1,300           | 1,474  | -174   | 4.9%           | 5.9%  | -13.7% |
| Lincoln            | 11,690      | 11,251  | 439    | 3.8% | 11,685      | 11,196  | 489    | 4.2%  | 5               | 55     | -50    | 0.0%           | 0.5%  | -10.2% |
| Los Alamos         | 11,992      | 11,659  | 333    | 2.8% | 11,610      | 11,238  | 372    | 3.2%  | 382             | 421    | -39    | 3.3%           | 3.7%  | -10.5% |
| Luna               | 14,210      | 12,881  | 1,329  | 9.4% | 14,453      | 12,858  | 1,595  | 11.0% | -243            | 23     | -266   | -1.7%          | 0.2%  | -16.7% |
| McKinley           | 27,606      | 25,541  | 2,065  | 7.5% | 27,239      | 24,862  | 2,377  | 8.7%  | 367             | 679    | -312   | 1.3%           | 2.7%  | -13.1% |
| Mora               | 2,112       | 1,942   | 170    | 8.0% | 2,181       | 1,951   | 230    | 10.5% | -69             | -9     | -60    | -3.2%          | -0.5% | -26.1% |
| Otero              | 27,753      | 26,345  | 1,408  | 5.1% | 27,243      | 25,697  | 1,546  | 5.7%  | 510             | 648    | -138   | 1.9%           | 2.5%  | -8.9%  |
| Quay               | 4,240       | 4,018   | 222    | 5.2% | 4,307       | 4,065   | 242    | 5.6%  | -67             | -47    | -20    | -1.6%          | -1.2% | -8.3%  |
| Rio Arriba         | 23,166      | 21,923  | 1,243  | 5.4% | 22,880      | 21,453  | 1,427  | 6.2%  | 286             | 470    | -184   | 1.3%           | 2.2%  | -12.9% |
| Roosevelt          | 9,351       | 8,976   | 375    | 4.0% | 9,364       | 8,922   | 442    | 4.7%  | -13             | 54     | -67    | -0.1%          | 0.6%  | -15.2% |
| San Miguel         | 13,640      | 12,872  | 768    | 5.6% | 13,585      | 12,605  | 980    | 7.2%  | 55              | 267    | -212   | 0.4%           | 2.1%  | -21.6% |
| Sierra             | 5,926       | 5,665   | 261    | 4.4% | 5,702       | 5,411   | 291    | 5.1%  | 224             | 254    | -30    | 3.9%           | 4.7%  | -10.3% |
| Socorro            | 9,927       | 9,493   | 434    | 4.4% | 9,549       | 9,055   | 494    | 5.2%  | 378             | 438    | -60    | 4.0%           | 4.8%  | -12.1% |
| Taos               | 17,901      | 16,862  | 1,039  | 5.8% | 17,770      | 16,512  | 1,258  | 7.1%  | 131             | 350    | -219   | 0.7%           | 2.1%  | -17.4% |
| Union              | 2,171       | 2,097   | 74     | 3.4% | 2,172       | 2,090   | 82     | 3.8%  | -1              | 7      | -8     | 0.0%           | 0.3%  | -9.8%  |

1/ All estimates are made in strict accordance with methodology provided by the U. S. Department of Labor, Bureau of Labor Statistics

2/ Metropolitan Statistical Area - Bernalillo, Sandoval, Torrance & Valencia Counties

3/ Metropolitan Statistical Area - San Juan County

4/ Metropolitan Statistical Area - Doña Ana County

5/ Metropolitan Statistical Area - Santa Fe County



## Unemployment Rates in New Mexico (Not Seasonally Adjusted)

| JULY 2006          |      |      |
|--------------------|------|------|
| AREAS              | RANK | RATE |
| LUNA               | 1    | 9.4% |
| MORA               | 2    | 8.0% |
| MCKINLEY           | 3    | 7.5% |
| GUADALUPE          | 4    | 6.3% |
| TAOS               | 5    | 5.8% |
| CIBOLA             | 6    | 5.6% |
| SAN MIGUEL         | 7    | 5.6% |
| CHAVES             | 8    | 5.4% |
| RIO ARRIBA         | 9    | 5.4% |
| CATRON             | 10   | 5.3% |
| FARMINGTON MSA 2/  | 11   | 5.3% |
| GRANT              | 12   | 5.2% |
| HIDALGO            | 13   | 5.2% |
| LAS CRUCES MSA 3/  | 14   | 5.2% |
| QUAY               | 15   | 5.2% |
| OTERO              | 16   | 5.1% |
| HARDING            | 17   | 4.8% |
| STATEWIDE          |      | 4.8% |
| ALBUQUERQUE MSA 1/ | 18   | 4.6% |
| EDDY               | 19   | 4.5% |
| SIERRA             | 20   | 4.4% |
| SOCORRO            | 21   | 4.4% |
| CURRY              | 22   | 4.3% |
| DE BACA            | 23   | 4.3% |
| COLFAX             | 24   | 4.2% |
| LEA                | 25   | 4.0% |
| ROOSEVELT          | 26   | 4.0% |
| LINCOLN            | 27   | 3.8% |
| SANTA FE MSA 4/    | 28   | 3.8% |
| UNION              | 29   | 3.4% |
| LOS ALAMOS         | 30   | 2.8% |

| JUNE 2006          |      |       |
|--------------------|------|-------|
| AREAS              | RANK | RATE  |
| LUNA               | 1    | 11.2% |
| MORA               | 2    | 8.4%  |
| MCKINLEY           | 3    | 7.3%  |
| GUADALUPE          | 4    | 7.2%  |
| TAOS               | 5    | 6.0%  |
| SAN MIGUEL         | 6    | 5.6%  |
| CHAVES             | 7    | 5.3%  |
| CIBOLA             | 8    | 5.3%  |
| FARMINGTON MSA 2/  | 9    | 5.2%  |
| QUAY               | 10   | 5.2%  |
| RIO ARRIBA         | 11   | 5.2%  |
| CATRON             | 12   | 5.1%  |
| GRANT              | 13   | 5.1%  |
| LAS CRUCES MSA 3/  | 14   | 5.1%  |
| OTERO              | 15   | 5.0%  |
| HARDING            | 16   | 4.8%  |
| STATEWIDE          |      | 4.8%  |
| HIDALGO            | 17   | 4.6%  |
| ALBUQUERQUE MSA 1/ | 18   | 4.4%  |
| CURRY              | 19   | 4.4%  |
| DE BACA            | 20   | 4.4%  |
| SIERRA             | 21   | 4.4%  |
| COLFAX             | 22   | 4.3%  |
| EDDY               | 23   | 4.3%  |
| SOCORRO            | 24   | 4.3%  |
| ROOSEVELT          | 25   | 4.1%  |
| LEA                | 26   | 3.9%  |
| LINCOLN            | 27   | 3.7%  |
| SANTA FE MSA 4/    | 28   | 3.7%  |
| UNION              | 29   | 3.5%  |
| LOS ALAMOS         | 30   | 2.7%  |

| JULY 2005          |      |       |
|--------------------|------|-------|
| AREAS              | RANK | RATE  |
| LUNA               | 1    | 11.0% |
| MORA               | 2    | 10.5% |
| MCKINLEY           | 3    | 8.7%  |
| GUADALUPE          | 4    | 8.4%  |
| SAN MIGUEL         | 5    | 7.2%  |
| TAOS               | 6    | 7.1%  |
| CHAVES             | 7    | 6.6%  |
| GRANT              | 8    | 6.6%  |
| CIBOLA             | 9    | 6.4%  |
| LAS CRUCES MSA 3/  | 10   | 6.2%  |
| RIO ARRIBA         | 11   | 6.2%  |
| CATRON             | 12   | 6.1%  |
| FARMINGTON MSA 2/  | 13   | 6.1%  |
| HIDALGO            | 14   | 5.7%  |
| OTERO              | 15   | 5.7%  |
| STATEWIDE          |      | 5.7%  |
| QUAY               | 16   | 5.6%  |
| EDDY               | 17   | 5.5%  |
| ALBUQUERQUE MSA 1/ | 18   | 5.4%  |
| DE BACA            | 19   | 5.3%  |
| SOCORRO            | 20   | 5.2%  |
| SIERRA             | 21   | 5.1%  |
| COLFAX             | 22   | 4.9%  |
| CURRY              | 23   | 4.9%  |
| LEA                | 24   | 4.8%  |
| ROOSEVELT          | 25   | 4.7%  |
| SANTA FE MSA 4/    | 26   | 4.4%  |
| LINCOLN            | 27   | 4.2%  |
| HARDING            | 28   | 4.1%  |
| UNION              | 29   | 3.8%  |
| LOS ALAMOS         | 30   | 3.2%  |

1/ Metropolitan Statistical Area - Bernalillo, Sandoval, Tarrant & Valencia Counties

2/ Metropolitan Statistical Area - San Juan County

3/ Metropolitan Statistical Area - Doña Ana County

4/ Metropolitan Statistical Area - Santa Fe County

## Need Labor Market Information?

We have several major publications detailing New Mexico's:

- Current economic conditions and trends
- Wages by occupations and areas
- Larger employers
- Growing jobs with skills and training needs
- Job market with hints for finding and keeping a job

*They are available, at no cost, by dropping by any NMDOL office.*

## ...Check Out Our Website!

For fast and easy access to the latest labor market information, please visit the New Mexico Department of Labor's website. There you will find a wide variety of information and tools for all kinds of people, including job seekers, employers, teachers, grant writers, career counselors, and students. All of our publications, including the one you are reading now, can be accessed online and are available sooner than if delivered by mail. This website also includes information on Department of Labor programs, contact names and addresses, and frequently asked questions about Department functions. In addition, all NMDOL employer forms can be downloaded from our website for easy access. Also provided are links to other related websites, including America's Job Bank for nationwide job searches. All this and more is available on our website at:

***www.dol.state.nm.us***



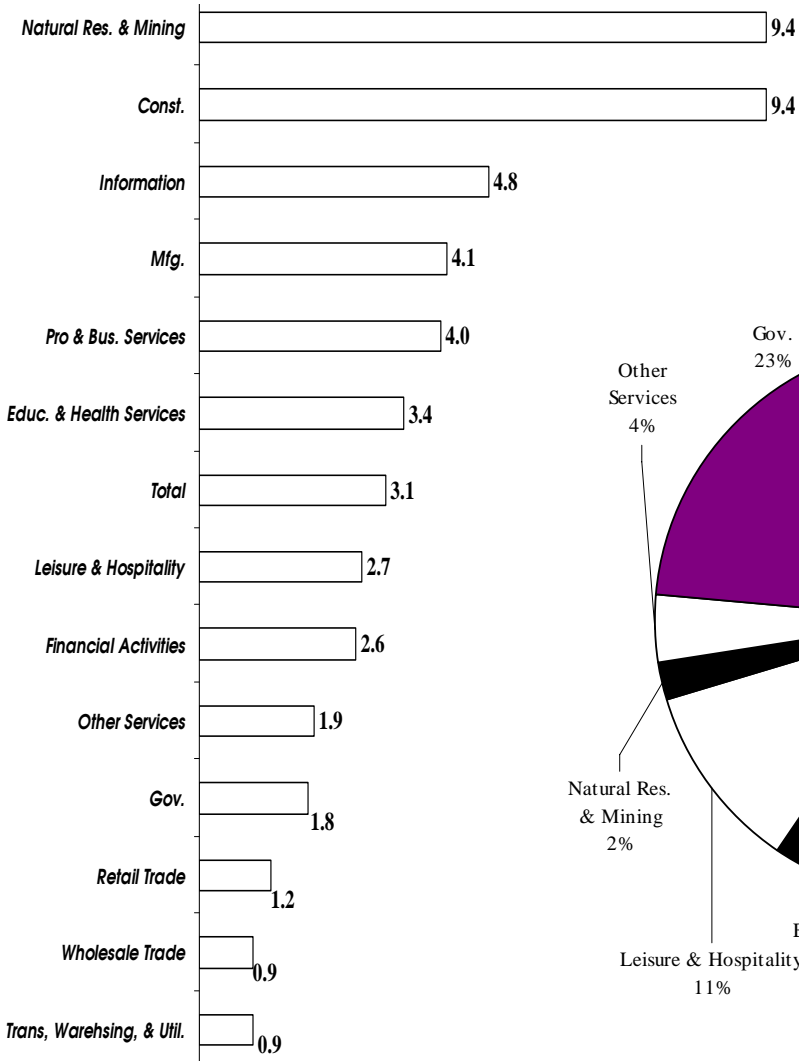
## Unemployment Rate by State (Seasonally Adjusted)

| State                | Rank      | July 2006 Rate |
|----------------------|-----------|----------------|
| Mississippi          | 1         | 8.0            |
| Alaska               | 2         | 7.0            |
| Michigan             | 3         | 7.0            |
| Kentucky             | 4         | 6.3            |
| South Carolina       | 5         | 6.2            |
| Tennessee            | 6         | 5.9            |
| Ohio                 | 7         | 5.8            |
| District of Columbia | 8         | 5.7            |
| Indiana              | 9         | 5.7            |
| Oregon               | 10        | 5.6            |
| Rhode Island         | 11        | 5.6            |
| Arkansas             | 12        | 5.4            |
| West Virginia        | 13        | 5.4            |
| Washington           | 14        | 5.3            |
| Texas                | 15        | 5.2            |
| New Jersey           | 16        | 5.1            |
| New York             | 17        | 5.1            |
| Wisconsin            | 18        | 5.0            |
| California           | 19        | 4.8            |
| Georgia              | 20        | 4.8            |
| Kansas               | 21        | 4.8            |
| Maine                | 22        | 4.8            |
| North Carolina       | 23        | 4.8            |
| Pennsylvania         | 24        | 4.8            |
| <b>United States</b> |           | <b>4.8</b>     |
| Arizona              | 25        | 4.7            |
| Colorado             | 26        | 4.7            |
| Illinois             | 27        | 4.7            |
| Massachusetts        | 28        | 4.7            |
| Missouri             | 29        | 4.7            |
| Nevada               | 30        | 4.5            |
| <b>New Mexico</b>    | <b>31</b> | <b>4.4</b>     |
| Connecticut          | 32        | 4.3            |
| Maryland             | 33        | 4.3            |
| Oklahoma             | 34        | 4.0            |
| Alabama              | 35        | 3.9            |
| Delaware             | 36        | 3.8            |
| Iowa                 | 37        | 3.8            |
| Minnesota            | 38        | 3.8            |
| Montana              | 39        | 3.8            |
| Idaho                | 40        | 3.6            |
| New Hampshire        | 41        | 3.6            |
| Vermont              | 42        | 3.5            |
| North Dakota         | 43        | 3.4            |
| Utah                 | 44        | 3.4            |
| Florida              | 45        | 3.3            |
| Nebraska             | 46        | 3.2            |
| South Dakota         | 47        | 3.2            |
| Virginia             | 48        | 3.2            |
| Hawaii               | 49        | 3.0            |
| Wyoming              | 50        | 3.0            |
| Louisiana            | 51        | 2.9            |

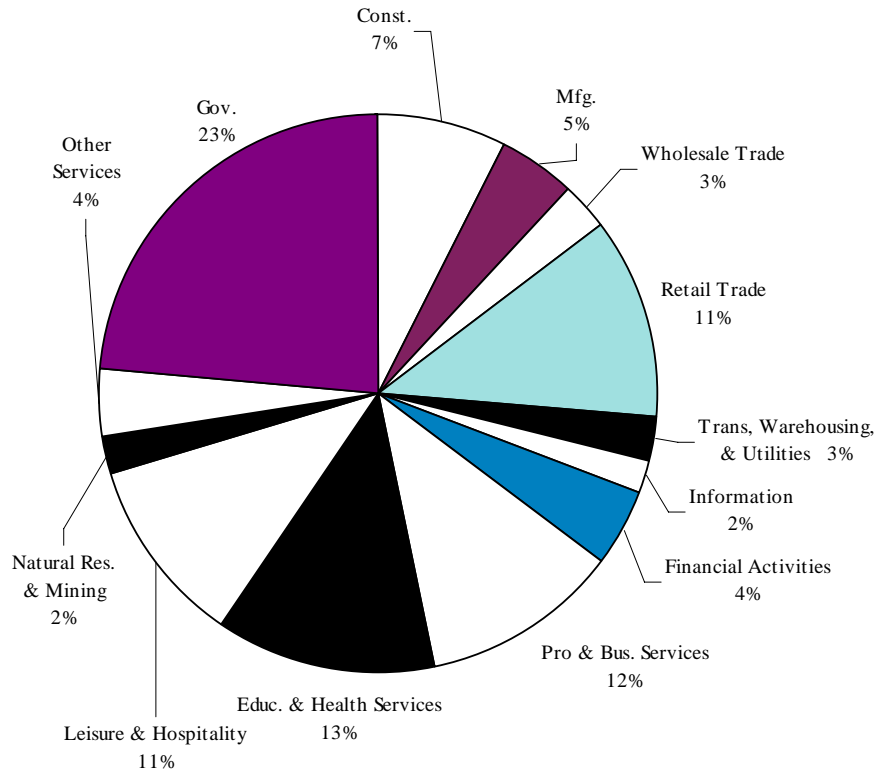
| State                | Rank      | July 2005 Rate |
|----------------------|-----------|----------------|
| Mississippi          | 1         | 7.1            |
| Alaska               | 2         | 6.7            |
| Michigan             | 3         | 6.7            |
| South Carolina       | 4         | 6.6            |
| District of Columbia | 5         | 6.4            |
| Kentucky             | 6         | 6.2            |
| Oregon               | 7         | 6.2            |
| Ohio                 | 8         | 5.9            |
| Illinois             | 9         | 5.8            |
| Louisiana            | 10        | 5.6            |
| Indiana              | 11        | 5.5            |
| Tennessee            | 12        | 5.5            |
| Washington           | 13        | 5.5            |
| North Carolina       | 14        | 5.4            |
| California           | 15        | 5.3            |
| Georgia              | 16        | 5.3            |
| Missouri             | 17        | 5.3            |
| <b>New Mexico</b>    | <b>18</b> | <b>5.2</b>     |
| Texas                | 19        | 5.2            |
| West Virginia        | 20        | 5.2            |
| Kansas               | 21        | 5.1            |
| Colorado             | 22        | 5.0            |
| New York             | 23        | 5.0            |
| Rhode Island         | 24        | 5.0            |
| <b>United States</b> |           | <b>5.0</b>     |
| Arkansas             | 25        | 4.9            |
| Connecticut          | 26        | 4.9            |
| Maine                | 27        | 4.9            |
| Pennsylvania         | 28        | 4.9            |
| Arizona              | 29        | 4.8            |
| Wisconsin            | 30        | 4.8            |
| Massachusetts        | 31        | 4.7            |
| Iowa                 | 32        | 4.5            |
| New Jersey           | 33        | 4.4            |
| Oklahoma             | 34        | 4.4            |
| Delaware             | 35        | 4.2            |
| Maryland             | 36        | 4.2            |
| Nevada               | 37        | 4.1            |
| Utah                 | 38        | 4.1            |
| Montana              | 39        | 4.0            |
| Alabama              | 40        | 3.9            |
| Wyoming              | 41        | 3.9            |
| Idaho                | 42        | 3.8            |
| Minnesota            | 43        | 3.8            |
| Nebraska             | 44        | 3.8            |
| South Dakota         | 45        | 3.8            |
| Florida              | 46        | 3.7            |
| New Hampshire        | 47        | 3.6            |
| Vermont              | 48        | 3.5            |
| Virginia             | 49        | 3.5            |
| North Dakota         | 50        | 3.4            |
| Hawaii               | 51        | 2.7            |

# New Mexico Nonagricultural Wage and Salary Employment

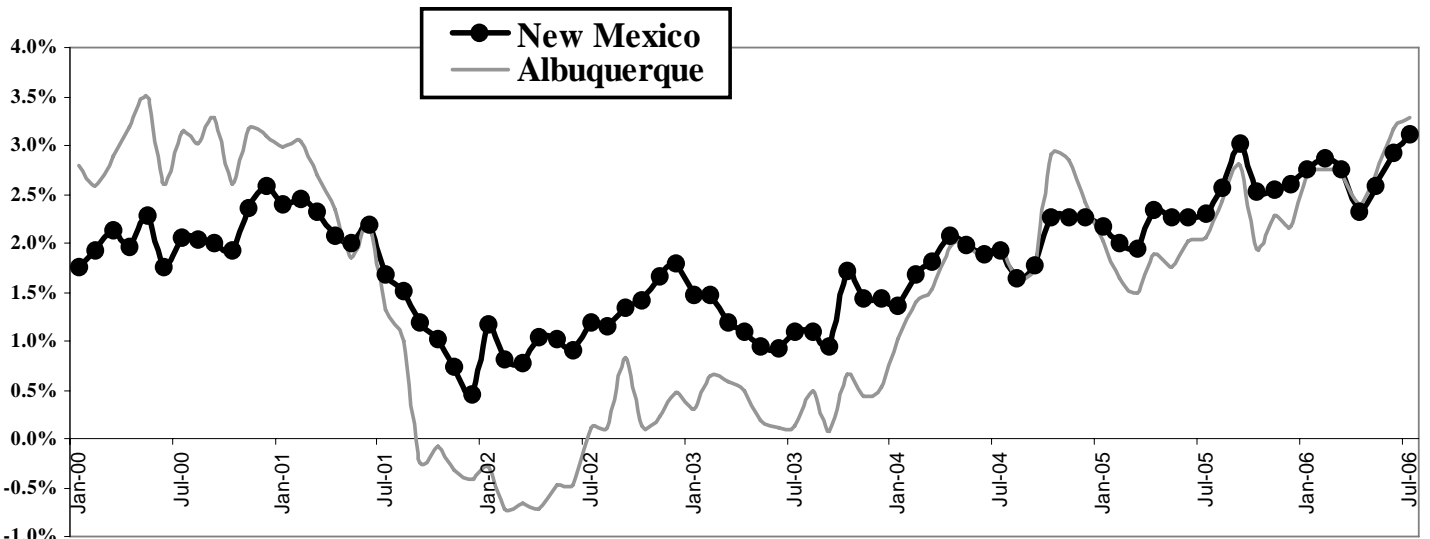
## Annual Growth Rates by Industry



## NAICS Industries



## New Mexico and Albuquerque Annual Nonfarm Job Growth Rates





## Nonagricultural Wage and Salary Employment

| ALBUQUERQUE   | Preliminary    | Revised        | Revised        | Change        |               |
|---|----------------|----------------|----------------|---------------|---------------|
|   | Jul-06         | Jun-06         | Jul-05         | Monthly       | Yearly        |
| <b>TOTAL NONAGRICULTURAL EMPLOYMENT 1/</b>                  | <b>389,100</b> | <b>390,600</b> | <b>376,700</b> | <b>-1,500</b> | <b>12,400</b> |
| GOODS PRODUCING   | 56,000         | 55,400         | 52,100         | 600           | 3,900         |
| SERVICES-PROVIDING  | 333,100        | 335,200        | 324,600        | -2,100        | 8,500         |
| <b>NATURAL RESOURCES AND MINING &amp; CONSTRUCTION</b>      | <b>32,200</b>  | <b>31,600</b>  | <b>29,400</b>  | <b>600</b>    | <b>2,800</b>  |
| <i>Specialty Trade Contractors</i>                          | 20,800         | 20,200         | 18,500         | 600           | 2,300         |
| <b>MANUFACTURING</b>  | <b>23,800</b>  | <b>23,800</b>  | <b>22,700</b>  | <b>0</b>      | <b>1,100</b>  |
| <i>Computer and Electronic Products</i>                     | 9,500          | 9,600          | 9,100          | -100          | 400           |
| <i>Semiconductor and Other Electronics</i>                  | 6,900          | 7,000          | 6,400          | -100          | 500           |
| <b>WHOLESALE TRADE</b>                                      | <b>13,100</b>  | <b>13,100</b>  | <b>12,900</b>  | <b>0</b>      | <b>200</b>    |
| <b>RETAIL TRADE</b>   | <b>43,900</b>  | <b>43,900</b>  | <b>43,800</b>  | <b>0</b>      | <b>100</b>    |
| <i>Food and Beverage Stores</i>                             | 5,200          | 5,100          | 4,900          | 100           | 300           |
| <i>General Merchandise Stores</i>                           | 9,200          | 9,100          | 8,600          | 100           | 600           |
| <i>Department Stores</i>                                    | 3,300          | 3,200          | 3,200          | 100           | 100           |
| <b>TRANSPORTATION, WAREHOUSING, AND UTILITIES</b>           | <b>10,100</b>  | <b>10,000</b>  | <b>10,000</b>  | <b>100</b>    | <b>100</b>    |
| <b>INFORMATION</b>  | <b>9,000</b>   | <b>9,000</b>   | <b>8,800</b>   | <b>0</b>      | <b>200</b>    |
| <i>Telecommunications</i>                                   | 4,400          | 4,300          | 4,200          | 100           | 200           |
| <b>FINANCIAL ACTIVITIES</b>                                 | <b>19,500</b>  | <b>19,400</b>  | <b>19,400</b>  | <b>100</b>    | <b>100</b>    |
| <i>Finance and Insurance</i>                                | 13,700         | 13,700         | 13,700         | 0             | 0             |
| <i>Credit Intermediation and Related Activities</i>         | 6,500          | 6,500          | 6,500          | 0             | 0             |
| <i>Depository Credit Intermediation</i>                     | 4,500          | 4,500          | 4,500          | 0             | 0             |
| <b>PROFESSIONAL AND BUSINESS SERVICES</b>                   | <b>63,000</b>  | <b>62,600</b>  | <b>60,900</b>  | <b>400</b>    | <b>2,100</b>  |
| Professional, Scientific, and Technical                     | 30,600         | 30,400         | 29,900         | 200           | 700           |
| <i>Scientific Research and Development</i>                  | 12,800         | 12,700         | 12,900         | 100           | -100          |
| Management of Companies and Enterprises                     | 4,000          | 3,900          | 3,800          | 100           | 200           |
| Administrative & Support & Waste Mgt & Remediation Services | 28,400         | 28,300         | 27,200         | 100           | 1,200         |
| <i>Employment Services</i>                                  | 12,000         | 11,900         | 11,600         | 100           | 400           |
| <i>Business Support Services</i>                            | 5,000          | 5,000          | 4,000          | 0             | 1,000         |
| <b>EDUCATIONAL AND HEALTH SERVICES</b>                      | <b>47,300</b>  | <b>47,800</b>  | <b>45,500</b>  | <b>-500</b>   | <b>1,800</b>  |
| <i>Health Care and Social Assistance</i>                    | 42,600         | 42,400         | 41,000         | 200           | 1,600         |
| <i>Ambulatory Health Care Services</i>                      | 20,700         | 20,400         | 19,800         | 300           | 900           |
| <b>LEISURE AND HOSPITALITY</b>                              | <b>39,100</b>  | <b>39,100</b>  | <b>37,400</b>  | <b>0</b>      | <b>1,700</b>  |
| <i>Food Services and Drinking Places</i>                    | 29,600         | 29,500         | 28,300         | 100           | 1,300         |
| <i>Full-Service Restaurants</i>                             | 13,400         | 13,300         | 12,600         | 100           | 800           |
| <b>OTHER SERVICES</b>                                       | <b>12,500</b>  | <b>12,500</b>  | <b>12,300</b>  | <b>0</b>      | <b>200</b>    |
| <b>GOVERNMENT</b>   | <b>75,600</b>  | <b>77,800</b>  | <b>73,600</b>  | <b>-2,200</b> | <b>2,000</b>  |
| Federal Government  | 14,400         | 14,900         | 14,300         | -500          | 100           |
| State Government 2/   | 22,900         | 23,400         | 22,300         | -500          | 600           |
| Local Government  | 38,300         | 39,500         | 37,000         | -1,200        | 1,300         |

1/ Estimates include all full-time and part-time wage and salary workers who worked or received pay during the pay period which included the 12th day of the month.

2/ Includes employees of federally funded state programs, state supported universities, and the three branches of state government.

## Nonagricultural Wage and Salary Employment

| <b>LAS CRUCES MSA</b>                              | Preliminary<br>Jul-06 | Revised<br>Jun-06 | Revised<br>Jul-05 | Change      |              |
|--|-----------------------|-------------------|-------------------|-------------|--------------|
|  |                       |                   |                   | Monthly     | Yearly       |
| <b>TOTAL NONAGRICULTURAL EMPLOYMENT 1/</b>         | <b>65,900</b>         | <b>66,000</b>     | <b>63,200</b>     | <b>-100</b> | <b>2,700</b> |
| GOODS PRODUCING                                    | 8,400                 | 8,100             | 7,800             | 300         | 600          |
| SERVICE PRODUCING                                  | 57,500                | 57,900            | 55,400            | -400        | 2,100        |
| <b>NATURAL RESOURCES MINING &amp; CONSTRUCTION</b> | <b>5,000</b>          | <b>4,800</b>      | <b>4,500</b>      | <b>200</b>  | <b>500</b>   |
| MANUFACTURING                                      | 3,400                 | 3,300             | 3,300             | 100         | 100          |
| WHOLESALE TRADE                                    | 1,500                 | 1,500             | 1,400             | 0           | 100          |
| RETAIL TRADE                                       | 7,200                 | 7,200             | 7,100             | 0           | 100          |
| TRANSPORTATION, WAREHOUSING, AND UTILITIES         | 1,700                 | 1,600             | 1,600             | 100         | 100          |
| INFORMATION  | 1,300                 | 1,300             | 1,100             | 0           | 200          |
| FINANCIAL ACTIVITIES                               | 2,500                 | 2,500             | 2,400             | 0           | 100          |
| PROFESSIONAL & BUSINESS SERVICES                   | 5,600                 | 5,700             | 5,500             | -100        | 100          |
| EDUCATIONAL AND HEALTH SERVICES                    | 10,400                | 10,300            | 9,800             | 100         | 600          |
| LEISURE AND HOSPITALITY                            | 6,700                 | 6,800             | 6,400             | -100        | 300          |
| OTHER SERVICES                                     | 1,600                 | 1,600             | 1,500             | 0           | 100          |
| <b>GOVERNMENT</b>                                  | <b>19,000</b>         | <b>19,400</b>     | <b>18,600</b>     | <b>-400</b> | <b>400</b>   |
| Federal  | 3,700                 | 3,700             | 3,600             | 0           | 100          |
| State  | 7,300                 | 7,200             | 7,300             | 100         | 0            |
| Local  | 8,000                 | 8,500             | 7,700             | -500        | 300          |

| <b>SANTA FE MSA</b>                                 | Preliminary<br>Jul-06 | Revised<br>Jun-06 | Revised<br>Jul-05 | Change     |            |
|---|-----------------------|-------------------|-------------------|------------|------------|
|   |                       |                   |                   | Monthly    | Yearly     |
| <b>TOTAL NONAGRICULTURAL EMPLOYMENT 1/</b>          | <b>64,300</b>         | <b>63,700</b>     | <b>63,400</b>     | <b>600</b> | <b>900</b> |
| GOODS PRODUCING                                     | 6,200                 | 6,000             | 6,000             | 200        | 200        |
| SERVICE PRODUCING                                   | 58,100                | 57,700            | 57,400            | 400        | 700        |
| <b>NATURAL RESOURCES, MINING &amp; CONSTRUCTION</b> | <b>5,100</b>          | <b>4,900</b>      | <b>4,800</b>      | <b>200</b> | <b>300</b> |
| MANUFACTURING                                       | 1,100                 | 1,100             | 1,200             | 0          | -100       |
| WHOLESALE TRADE                                     | 1,100                 | 1,100             | 1,100             | 0          | 0          |
| RETAIL TRADE  | 8,700                 | 8,500             | 8,600             | 200        | 100        |
| TRANSPORTATION, WAREHOUSING, AND UTILITIES          | 700                   | 700               | 700               | 0          | 0          |
| INFORMATION   | 1,300                 | 1,200             | 1,000             | 100        | 300        |
| FINANCIAL ACTIVITIES                                | 3,000                 | 3,000             | 2,900             | 0          | 100        |
| PROFESSIONAL & BUSINESS SERVICES                    | 5,500                 | 5,500             | 5,500             | 0          | 0          |
| EDUCATIONAL AND HEALTH SERVICES                     | 8,300                 | 8,500             | 8,100             | -200       | 200        |
| LEISURE AND HOSPITALITY                             | 9,200                 | 9,000             | 9,600             | 200        | -400       |
| OTHER SERVICES                                      | 3,700                 | 3,600             | 3,600             | 100        | 100        |
| <b>GOVERNMENT</b>                                   | <b>16,600</b>         | <b>16,600</b>     | <b>16,300</b>     | <b>0</b>   | <b>300</b> |
| Federal   | 1,200                 | 1,200             | 1,200             | 0          | 0          |
| State 2/  | 8,300                 | 8,200             | 8,200             | 100        | 100        |
| Local   | 7,100                 | 7,200             | 6,900             | -100       | 200        |

| <b>FARMINGTON MSA</b>                               | Preliminary<br>Jul-06 | Revised<br>Jun-06 | Revised<br>Jul-05 | Change      |              |
|---|-----------------------|-------------------|-------------------|-------------|--------------|
|   |                       |                   |                   | Monthly     | Yearly       |
| <b>TOTAL NONAGRICULTURAL EMPLOYMENT</b>             | <b>50,200</b>         | <b>50,800</b>     | <b>48,800</b>     | <b>-600</b> | <b>1,400</b> |
| <b>TOTAL PRIVATE</b>                                | <b>39,700</b>         | <b>39,400</b>     | <b>38,500</b>     | <b>300</b>  | <b>1,200</b> |
| GOODS PRODUCING                                     | 11,400                | 11,200            | 10,900            | 200         | 500          |
| SERVICE PRODUCING                                   | 38,800                | 39,600            | 37,900            | -800        | 900          |
| PRIVATE SERVICE PRODUCING                           | 28,300                | 28,200            | 27,600            | 100         | 700          |
| <b>NATURAL RESOURCES, MINING &amp; CONSTRUCTION</b> | <b>9,800</b>          | <b>9,600</b>      | <b>9,200</b>      | <b>200</b>  | <b>600</b>   |
| <b>TRADE, TRANSPORTATION AND UTILITIES</b>          | <b>10,800</b>         | <b>10,700</b>     | <b>10,600</b>     | <b>100</b>  | <b>200</b>   |
| <b>EDUCATIONAL AND HEALTH SERVICES</b>              | <b>5,600</b>          | <b>5,700</b>      | <b>5,400</b>      | <b>-100</b> | <b>200</b>   |
| <b>LEISURE AND HOSPITALITY</b>                      | <b>5,400</b>          | <b>5,300</b>      | <b>5,200</b>      | <b>100</b>  | <b>200</b>   |
| <b>GOVERNMENT</b>                                   | <b>10,500</b>         | <b>11,400</b>     | <b>10,300</b>     | <b>-900</b> | <b>200</b>   |
| Federal   | 1,500                 | 1,600             | 1,500             | -100        | 0            |
| State   | 500                   | 500               | 500               | 0           | 0            |
| Local   | 8,500                 | 9,300             | 8,300             | -800        | 200          |

1/ Estimates include all full-time and part-time wage and salary workers who worked or received pay during the pay period which included the 12th day of the month.

2/ Includes employees of federally funded state programs, state supported universities, and the three branches of state government.

## Nonagricultural Wage and Salary Employment

- Seasonally Adjusted -

| NEW MEXICO                                   | Preliminary<br>Jul-06 | Revised<br>Jun-06 | Monthly<br>Change |
|--|-----------------------|-------------------|-------------------|
| <b>TOTAL NONAGRICULTURAL EMPLOYMENT 1/</b>   | 832,500               | 828,400           | 4,100             |
| <b>NATURAL RESOURCES AND MINING</b>          | 18,600                | 18,500            | 100               |
| <b>CONSTRUCTION</b>                          | 59,600                | 58,500            | 1,100             |
| <b>MANUFACTURING</b>                         | 37,300                | 37,300            | 0                 |
| <b>TRADE, TRANSPORTATION AND UTILITIES</b>   | 141,600               | 140,500           | 1,100             |
| <b>INFORMATION</b> (Not Seasonally Adjusted) | 15,400                | 15,200            | 200               |
| <b>FINANCIAL ACTIVITIES</b>                  | 35,700                | 35,600            | 100               |
| <b>PROFESSIONAL AND BUSINESS SERVICES</b>    | 95,400                | 94,800            | 600               |
| <b>EDUCATIONAL AND HEALTH SERVICES</b>       | 109,300               | 108,500           | 800               |
| <b>LEISURE AND HOSPITALITY</b>               | 85,700                | 85,000            | 700               |
| <b>OTHER SERVICES</b>                        | 29,800                | 30,100            | -300              |
| <b>GOVERNMENT</b>                            | 204,100               | 204,400           | -300              |

1/ Total includes the Information sector, which is not seasonally adjusted.

## Average Hours and Earnings

Prepared in cooperation with the U.S. Bureau of Labor Statistics

|                        | AVERAGE WEEKLY EARNINGS |          |          | AVERAGE WEEKLY HOURS |         |         | AVERAGE HOURLY EARNINGS |         |         |
|------------------------|-------------------------|----------|----------|----------------------|---------|---------|-------------------------|---------|---------|
|                        | July 06                 | June 06  | July 05  | July 06              | June 06 | July 05 | July 06                 | June 06 | July 05 |
| <b>NEW MEXICO</b>      |                         |          |          |                      |         |         |                         |         |         |
| NATURAL RES. & MINING  | \$810.04                | \$808.28 | \$749.05 | 44.0                 | 44.0    | 43.6    | \$18.41                 | \$18.37 | \$17.18 |
| CONSTRUCTION           | \$641.97                | \$640.78 | \$622.50 | 39.8                 | 39.8    | 39.7    | \$16.13                 | \$16.10 | \$15.68 |
| MANUFACTURING          | \$551.15                | \$550.76 | \$535.08 | 39.2                 | 39.2    | 39.0    | \$14.06                 | \$14.05 | \$13.72 |
| WHOLESALE TRADE        | \$531.87                | \$530.01 | \$520.61 | 35.2                 | 35.1    | 35.2    | \$15.11                 | \$15.10 | \$14.79 |
| RETAIL TRADE           | \$359.20                | \$358.88 | \$352.14 | 32.1                 | 32.1    | 32.1    | \$11.19                 | \$11.18 | \$10.97 |
| FINANCIAL ACTIVITIES   | \$503.38                | \$501.60 | \$492.06 | 35.3                 | 35.2    | 35.4    | \$14.26                 | \$14.25 | \$13.90 |
| <b>ALBUQUERQUE MSA</b> |                         |          |          |                      |         |         |                         |         |         |
| MANUFACTURING          | \$622.70                | \$571.52 | \$608.40 | 40.2                 | 37.6    | 39.0    | \$15.49                 | \$15.20 | \$15.60 |

Estimates include all full-time and part-time wage and salary workers who worked or received pay during the pay period which included the 12th day of the month. Self-employed, family workers, household workers and members of the Armed Forces are excluded. The average earnings are "gross" reflecting not only changes in basic hourly and incentive wage rates but also such factors as premium pay for overtime and shift differentials. The work week information relates to the average hours for which pay was received, and is different from standard or scheduled hours due to absenteeism, labor turnover, part time work, overtime work etc.

## U.S. Consumer Price Index

|       | Index Base Year 1982-84 = 100 |         |         | PERCENT CHANGE |              |
|-------|-------------------------------|---------|---------|----------------|--------------|
|       | July 06                       | June 06 | July 05 | Month to Month | Year to Year |
| CPI-U | 203.5                         | 202.9   | 195.4   | 0.3%           | 4.1%         |
| CPI-W | 199.2                         | 198.6   | 191.0   | 0.3%           | 4.3%         |

\*CPI-U - All Urban Consumers

\*CPI-W - Urban Wage Earners and Clerical Workers - Source: U.S. Department of Labor, Bureau of Labor Statistics

## New Mexico Area Economic Activity

(SOURCES: Published articles, government documents, private and public sector news releases and reports from local New Mexico Department of Labor Workforce Centers. In most cases, no attempt is made to verify accuracy of information.)

### Statewide:

At its July meeting, the Job Training Incentive Program Board approved \$681,192 for training funds, creating 126 new jobs for Bernalillo, Sandoval, Santa Fe, and Curry counties. **Aero Mechanical Industries**, a Rio Rancho-based aviation repair company that supports the global aerospace industry, will receive \$130,170 for 23 jobs. **CVILaser** of Albuquerque, supplier of optics, filters, mirrors, and mounts in the growing field of laser-based applications, was awarded \$97,348 for 12 new jobs. Santa Fe's **Deep Web Technologies**, provider of customized software and crawling solutions for knowledge management, was approved for \$44,960 for four new jobs. **SEI-CCS** from Clovis will receive \$282,108 for 71 new jobs. **Optomec**, an Albuquerque company that specializes in the design and fabrication of optics-related hardware (lasers, fiber optics and optical instruments) for the photonics industry, was granted \$62,776 for four new jobs. Also from Albuquerque, **OGB Architectural Millwork**, a manufacturer of custom casework and specialty millwork utilizing natural and engineered wood products, plastic laminates, and wood veneers, was awarded \$63,830 for 12 new jobs.

**Windstream**, a newly created company formed from the merger of Valor and Alltel, plans to lay off about half of its New Mexico workforce. Windstream plans to cut 105 of the 207 jobs it has in seven locations around the state. The largest number of workers will be cut from the Carlsbad call center, which will see staffing go from 105 jobs to just 20. The Espanola call center will lose 16 of its 21 jobs. The Hobbs administrative office will see two jobs cut, while offices in Santa Fe and Fairview will each lose one position. Staffing in Ruidoso and Truth or Consequences offices will be unchanged.

### Albuquerque Area, Bernalillo County:

The **Smith's Supermarket** slated to be built at the corner of Golf Course Road and McMahon on the city's West Side has encountered delays in moving through the planning process with the city of Albuquerque. Smith's announced in late 2004 that the store should be open by mid-2006. The company is still in the process of obtaining approval from the Albuquerque Development Review Board but hopes to have the 58,000-square-foot store built and open for business by mid-2007.

A new 22,000-square-foot shopping center is under construction on one of the last open commercial parcels on Coors north of Paseo del Norte. **The Shops at Vista del Bosque** is expected to be completed in August, and the developer has already leased ten of the 13 spaces in the center. Tenants include the New York Pizza Department and La Salita restaurants, an insurance office, a nail salon, two cellular phone stores and a car rental business. The center's owner, Phillip Sterling of Sterling Development, has said that several national chains are also looking at the center.

**IT'Z**, a family dining establishment with entertainment and a retail store, opened in late July at 4595 Montgomery Blvd. next to the Montgomery Plaza. The new buffet restaurant can seat about 800 patrons in its four themed dining areas. The company held a job fair in early July to fill 250 positions.

The nuclear weapons workforce at **Sandia National Laboratories** is expected to decline by at least 150 jobs over the next few years. An internal newsletter said the reductions to the workforce would be made through attrition. The lab faces the challenges of budget constraints and an increasing workload. The laboratory is currently working on overhauling the W76 submarine-launched warhead, and preliminary work is underway on what could be the nation's first new nuclear weapons design in the past twenty years.

Construction of two 24,000-square-foot sound stages and the administrative offices mark the start of **Pacifica Ventures' Albuquerque Studios**. The project, located in the Mesa del Sol development, is part of a \$74 million endeavor that will support the growing New Mexico film industry. The next phase of the project, slated to begin next spring, will add additional sound stages, a large building for set construction, and a back lot for use as an outdoor set.

### Roswell Area, Chaves County:

The Roswell City Council approved sponsorship of \$25 million in industrial revenue bonds for **Leprino Foods**. The bond sales will pay for a 37,000-square-foot expansion to the company's factory. Leprino is currently the second largest producer of mozzarella cheese in the country. When the expansion is completed, Leprino will add about 20 more workers to its 400-member workforce.

### Grants Area, Cibola County:

After about four months of renovation, **The El Dorado Hotel** and café opened in mid-June. The café features authentic Mexican fare with family recipes from Mexico. The hotel has 52 guest rooms, all with new furniture. The hotel and café employ about 18 workers.

### Clovis Area, Curry County:

After being approved for the funding of 71 jobs by the state's Job Training Incentive Board, SEI-CCS said it would actually hire up to 80 more people for its Clovis call center. The company's professionals provide hardware, software, and procedural technical support for McDonald's Corporation. The company currently has 44 employees in its bilingual call center.

### Carlsbad Area, Eddy County:

A nationwide assisted living franchise is coming to Carlsbad in November. **Bee Hive Homes** held the groundbreaking for its new 7,000-square-foot facility in early June. The new home will accommodate 15 or 16 residents and have a staff of six to eight employees.



**Santa Rosa Area, Guadalupe County:**

After 18 years of operation in Albuquerque, **The Beach Waterpark** is being moved to Santa Rosa. Waterslides, canopies, park benches and picnic tables will be dismantled and moved. Santa Rosa City Administrator Tim Dodge said that much of the equipment from The Beach would be added to Park Lake.

**Deming Area, Luna County:**

**New Solar Ventures'** 300-megawatt solar power plant is on hold pending financing and the results of a feasibility study to determine access to a nearby power line. The company needs to raise \$1.5 billion in private funding. Also on hold is the construction of a factory to manufacture solar panels by **Solar Torx**, a partner to Solar Ventures.

The newly completed **Luna Energy Facility** went online with 450 megawatts of electric power late this spring. Three companies—Phelps Dodge, Public Service Company of New Mexico and Tucson Electric Power—purchased the unfinished plant from Duke Energy in November 2004. The plant uses combined-cycle technology with two natural gas-fired turbines and one steam turbine to produce electricity. About 25 workers are employed at the plant.

**Gallup Area, McKinley County:**

The proposed **Desert Rock Energy Project** moved a step closer to realization with the ratification by the tribal council of lease agreements between the Navajo Nation, the Dine Power Authority, and Desert Rock. Construction of the proposed plant is expected to start in mid-2007 and will require about four years to complete.

**Rio Rancho Area, Sandoval County:**

**Intel** is cutting 1,000 management positions worldwide as it seeks to become more efficient in the face of stronger competition and a slowing demand for personal computers. The company has not specified how many positions will be cut at the plant in Rio Rancho. Intel has about 5,600 employees in Rio Rancho and about 101,000 worldwide. A former Intel employee said that the company laid off about 40 supervisors and managers at the Rio Rancho plant. The company declined to confirm the number of workers let go by location.

**Santa Fe Area, Santa Fe County:**

A 32,000-square-foot Lexus automobile dealership is planned for the southwest side of Santa Fe. **Pan American Holdings** plans to build on 9.4 acres of land along the east side of Cerrillos Road, just north of I-25. The dealership will employ about 50 full- and part-time workers.

**Taos Area, Taos County:**

**Ci Direct**, a national bilingual insurance provider, is going to add 75 new employees to its Taos workforce. CI Direct provides licensed agent sales and customer support for the insurance and financial services marketplace. Average salaries for the new workers will be about \$23,400 per year plus benefits. The company currently has 38 employees in Taos. Future Taos plans are for the company to invest \$2.8 million over the next five years in an 11,000-square-foot facility.

**Estancia Area, Torrance County:**

New Mexico's first commercial-size, biomass-fired electric generating plant is planned for the Estancia area and could be under construction as early as January. Public Service Company of New Mexico signed an agreement with **Western Water and Power** to purchase power from the plant. Construction of the plant will take about two years and will require a workforce of about 100 to 150 workers during construction. When completed, the plant will employ about 20 workers and create about 50 to 100 jobs for workers to cut and chip wood for the plant.

**Belen Area, Valencia County:**

**LoPresti Aviation** has said that they will build a 100,000-square-foot airplane manufacturing plant at the Belen Airport. Belen was selected over about 75 other communities based in large part on the airport's runway, access to transportation and high quality labor force. The company plans to build a two-passenger, high-performance airplane that sells for about \$295,000. The airplane plant could employ more than 300 people within three years.



New Mexico Department of Labor  
Economic Research and Analysis (CC6097)  
P.O. Box 1928  
Albuquerque, New Mexico 87103



---

Official Business  
Penalty for Private Use, \$300



*New Mexico Labor Market Report*  
is a monthly publication from the New Mexico  
Department of Labor

*Art Martinez*, Bureau Chief  
Economic Research and Analysis Bureau

**Major Contributors:**

*Mark Boyd*, Economist  
*Tracy Shaleen*, Economist  
*Karl Romero*, Graphic Artist

**Other Contributors:**

*Herb Greenwall*, Economist Supervisor